



# DELHI PUBLIC SCHOOL GAYA

(Under the aegis of the Delhi Public School Society, New Delhi)  
Affiliated to C.B.S.E, New Delhi Affiliation No.330530, School Code - 65572

## WINTER VACATION ASSIGNMENT CLASS-VIII (SESSION: 2023-24)

*Are you looking for some interesting fun learning assignment to make your learning session interesting and engaging? Here in this assignment, you will find some very interesting and engaging tasks that will be fun solving.*

### ENGLISH

- Read the passage and answer the following questions.  
Caffeine is a natural stimulant found in coffee beans, tea leaves, and certain plants. Its popularity stems from its ability to enhance alertness and reduce fatigue, making it a common ingredient in many beverages consumed worldwide. Caffeine works by blocking adenosine, a neurotransmitter responsible for promoting sleep and relaxation. This blockade results in increased levels of other neurotransmitters, such as dopamine and nor epinephrine, leading to heightened alertness and improved mood. Despite its widespread use, moderation is key, as excessive caffeine intake can lead to negative effects such as insomnia, jitteriness, and increased heart rate. However, when consumed responsibly, caffeine can offer various health benefits, including improved cognitive function and a temporary boost in physical performance.
  - What is caffeine?
    - A sleep-inducing chemical
    - A natural stimulant
    - A muscle relaxant
    - An antibiotic
  - What neurotransmitter does caffeine block?
    - Dopamine
    - Adenosine
    - Serotonin
    - Acetylcholine
  - What can excessive caffeine intake lead to?
    - Improved cognitive function
    - Insomnia and jitteriness
    - Enhanced relaxation
    - Reduced heart rate
  - In what beverages is caffeine commonly found?
    - Only in alcoholic drinks
    - Only in fruit juices
    - In coffee, tea, and certain plants
    - Only in milkshakes
  - What is the key to consuming caffeine responsibly?
    - Avoiding it completely
    - Consuming it excessively
    - Moderation
    - Drinking it only at night
- Change the following sentences into indirect speech.
  - Rahul told to me, "When are you leaving?"
  - "Where do you live?" the stranger asked Aladdin.
  - The teacher said to Shelly, "Why are you laughing?"
  - Dronacharya said to Arjun, "Shoot the bird's eye."
  - "Call the first convict," said the jury.
- Fill in the blanks by choosing the appropriate option.
  - I visit the Grand Canyon \_\_\_ I go to Arizona. (once, whenever, wherever)
  - This is the place \_\_\_ we stayed last time we visited. (where, when, how)
  - \_\_\_ you win the first place; you will receive a prize. (Wherever, If, Unless)
  - You won't pass the test \_\_\_ you study. (when, if, unless)
  - I could not get a seat, \_\_\_ I came early. (as, though, when)
- On the basis of the information provided in the box below, write a short bio-sketch of Abraham Lincoln.  
Born: 1809 in Northern Kentucky  
Family: Father- wealthy farmer, lost his land when Lincoln was 7, moved to Indiana  
Mother- died when he was nine, family moved to Illinois soon after  
Education: Little formal education, loved to read. Studied law by reading law books- became a lawyer in 1837, Springfield, Illinois

Political Career: began early- served in State Legislature, in the U.S. House of Representatives. Gifted Speaker, speeches against slavery, nomination for Presidency- won in 1860. Re-elected in 1864  
Death: assassinated by John Wilks Booth on April 15, 1865. Remembered for wisdom, compassion, patriotism

## हिन्दी

1. किसी ऐसी घटना का वर्णन कीजिए जब किसी अनजान व्यक्ति ने आपकी सहायता की हो ।
2. कबीरदास, रहीमदास, रसखान और तुलसीदास के चित्र एवं उनके दो-दो दोहों का संकलन कर एक दोहा-पत्रिका तैयार कीजिए ।
3. जीवन में निराश व्यक्तियों को आप क्या संदेश देना चाहेंगे? उक्त कथन के संदर्भ में लगभग 100 शब्दों में अपने विचार लिखिए ।

## SANSKRIT

1. तत्, एतत्, किम्, अस्मद् और युष्मद् शब्दरूप सभी लिंगों में लिखें और याद करें।  
\*\*गृहकार्य- पुस्तिका में (Assignment copy) कार्य करें।

## MATHEMATICS

1. The base area of a right circular cylinder is  $16\pi \text{ cm}^2$ . Its height is 5 cm. What will be its curved surface area?
2. The cross-section of the canal is in a trapezium shape, and the width of the canal at the top is 12 m, whereas 8 m at the bottom. Find the canal's depth if the cross-section's area is  $840 \text{ m}^2$ .
3. A field is 150 m long and 100 m wide. A plot (outside the field) 50m long and 30 m wide is dug to a depth of 8 m and the earth taken out from the plot is spread evenly in the field. By how much is the level of field raised?
4. What is the sum of the measures of the angles of a convex quadrilateral? Will this property hold if the quadrilateral is not convex? Draw a non-convex quadrilateral and prove your statement.
5. A river 2 m deep and 45 m wide is flowing at the rate of 3km/hr. Find the amount of water that runs into the sea per minute.
6. Do the activity 20 from the attached **PDF LINK** in a slide file?

### Objective:

To make a 'protractor' by paper folding

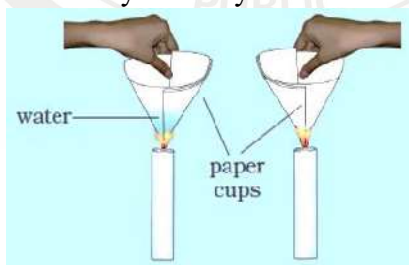
Link:

<https://ncert.nic.in/pdf/publication/sciencelaboratorymanuals/classItoVIII/mathematics/ahelm103.pdf>

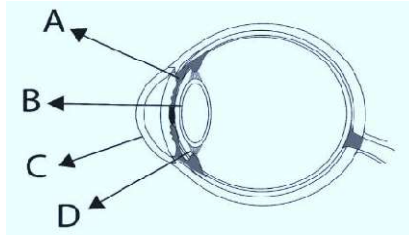
(Page number 109)

## SCIENCE

1. Which one the following caught fire easily and why?



2. Label A, B, C and D and write their role:



3. With the help of a suitable diagram, explain electrolytic refining of copper.
4. Why do you think electroplated jewellery are in demand?
5. Find out the health concerns associated with chromium electroplating. How are people trying to resolve them?
6. Prepare a working model of the following: *(any one)*

(a) Make a Solar Desalinator	(b) Build a Hydraulic Elevator
(c) Make a Chaff Machine	(d) Make a Electric Generator

### SOCIAL SCIENCE

1. What is the general trend of Migration? Mention the factors that cause population change.
2. How can you say that the leaders of the congress were moderates? Express your views.
3. On an outline map of India answer the following questions:  
Show the following states:
  - (a) State in which Jallianwala Bagh incident took place?
  - (b) Where did 'forest Satyagrahas' took place?
  - (c) Name the state where Swadeshi Movement was strongest in action.
4. Depict the situation of water shortage in Chennai through a diagram.( Use pencil and color of your choice to draw)

### COMPUTER

**Create a presentation or a chart on the topic:**

1. CSS properties of lists.

### GERMAN

Task 1. Schreiben Sie bitte die nachteile und Vorteile von Technology

Task 2. Machen sie die sätze mit dürfen und wollen

-----X-----