

## Class X Exam 2023-24

### English Language and Literature (184)

**Time Allowed : 3 Hrs.**

**Maximum Marks: 80**

**General Instructions:**

1. The Question Paper contains THREE sections READING, GRAMMAR & WRITING and LITERATURE.
  2. Attempt question based on specific instructions for each part.
- 

#### SECTION A - READING SKILLS

20

#### Reading Comprehension Through Unseen Passages

**1. Read the following text.**

10

1. The seasonal problem of water taps running dry is plaguing most of our major cities. With the bigger rivers flowing in trickles and ponds and wells reduced to clay pits, village women in remote areas have to fetch every drop of water for drinking, cooking, washing and so on, across large distances. This has only worsened a perennial problem, that of widespread pollution of water, rendering it unfit for human consumption. The monsoons and the attendant floods will not solve this problem.
2. The Delhi Administration is seriously worried about the threat to civic health posed by the polluted waters of the Yamuna. Two main tanks are to be set up to treat sewage. At present, only 60 per cent of the 200 million gallons of the city's sewage receives any kind of treatment before it is dumped into the river which supplies water not only to this city but to innumerable towns and villages downstream. The Ganga, the Yamuna, the Kaveri, in fact, all our important rivers serving many urban conglomerations, are fast becoming a major source of diseases.
3. A comprehensive bill introduced in the Parliament recently envisages the setting up of central and state boards for the prevention and control of water pollution. But it will obviously take some time before legislation is passed and effectively implemented. Meanwhile, the problem continues to swell. According to a survey of eight dwelling countries conducted a couple of years ago, 90 per cent of all child deaths were due to water-borne diseases. It is the same unchanged story today.
4. In a country like India, a burgeoning population continuing to use the open countryside as a lavatory means that with every dust storm and rain, human excreta laden with germs and parasites find their way to ponds, shallow wells and even the streams and rivers. Only 18 per cent of the rural folk have access to potable water.
5. A new threat that has already assumed alarming proportions is industrial waste which is generally dumped untreated into the nearest river. For instance, for every kilogram of process hide, 30-40 litres of foul-smelling, wastewater has to be disposed of. There are at least 900 licensed tanneries in the organised sector. Putrefied paper and jute waste, metallic waste from strawboard and textile mills, sulphur, ammonia, urea, metallic salts and corrosive acids all find their way to the rivers of India.
6. It is important not only to make new laws to ensure the purity of water but also to realise the urgency of implementing them ruthlessly if we are to avoid a national health disaster cutting across the barrier between towns and the countryside.

**Answer the following questions, based on the passage above.**

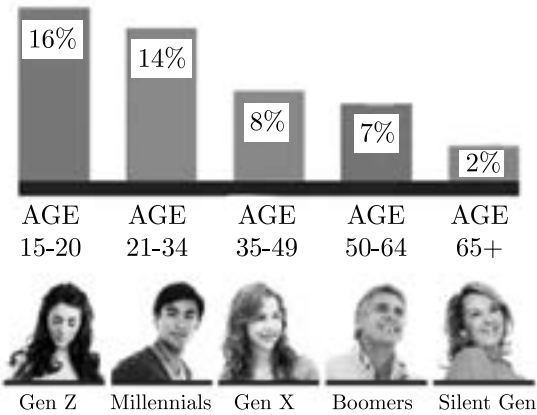
- i.** Why does the writer say that ‘this has only worsened a perennial problem?’ 1  
(a) There is climate change and increasing floods.  
(b) More and more is becoming unfit for human use.  
(c) The water table has gone down.  
(d) There is no more clean water.
- ii.** Based on your reading of the text, list two reasons why the writer says that 2  
According to a survey of eight dwelling countries conducted a couple of years ago, 90 percent of all child deaths were due to water-borne diseases. (Answer in about 40 words)
- iii.** Complete the sentence appropriately. 1  
Only 18 percent of the rural folk have access to potable water because \_\_\_\_\_.
- iv.** The passage includes some words that are opposites of each other. From the sets (a)-(e) given below, identify two sets of antonyms. 1  
(a) Reduce and swell  
(b) Prevention and control  
(c) Burgeoning and becoming  
(d) Running and plaguing  
(e) Town and countryside
- v.** Complete the sentence appropriately. 1  
The need of the hour to avoid a national health disaster is to \_\_\_\_\_.
- vi.** Which new threat is the writer talking about in Paragraph 5? Answer in about 40 words. 2
- vii.** Select the option that corresponds to the following relation below. 1  
A new threat that has already assumed alarming proportions is industrial waste which is generally dumped untreated into the nearest river. (Paragraph 5)  
(a) The crime rate is at its peak mainly caused due to inequality, financial burden and overexposure to television.  
(b) Human behaviour is often affected by the people around them.  
(c) Happiness can be found in even the smallest of things in life, said a wise person.  
(d) In order to be successful, one needs to have patience and perseverance.
- viii.** The writer expresses his concern when he says only 18 percent of the rural folk have access to potable water. 1  
State one point that supports the above statement.

2. Read the following text.

- 1. Celebrities advertising products is nothing new, in fact, it has been part of our lives for years. Back in the 2000’s, you couldn’t sit through a commercial break without seeing the teen pop icon of that time, Britney Spears, endorsing Pepsi. The Pepsi legacy was later continued by the most famous celebrity Beyonce. She was paid millions to promote the carbonated drink, which outraged health advocacy groups. Many concerned people questioned her ethics, as to why she was supporting a drink that plays a major role in causing obesity.
- 2. With the growing importance of social media in a shopper’s purchase journey, companies are evolving and stepping up the endorsement game across different channels. With celebrities vouching for promoting their products, brands can increase awareness, trust, and familiarity, which are important variables in the purchase decision-making process.
- 3. Consumers feel more sympathetic towards a brand if their products are promoted by a celebrity they admire or relate to. It’s a simple psychological effect: people believe that purchasing a product that’s promoted by a celebrity they admire, will allow them to emulate the celebrity’s desired traits or attract similar people into their lives. They will associate the celebrities’ success, beauty, athletic skill, etc. with a particular product.
- 4. Research by Nielson conducted in 2015 broke down the level of trust in advertising formats by different generations. It found that celebrity endorsements resonate more strongly with Generation Z (ages 15-20) and Millennial (ages 21-34) audiences. Brands are taking advantage of that by increasingly utilising the social media communities of celebrities. Social media is a way for consumers, in particular, those of younger demographics, to engage and build intimate connections with the celebrities they follow, making it the place for these celebrities to plug a company or a product on their personal social media accounts.
- 5. While celebrity endorsements certainly help to attract consumers, their direct influence on the consumers’ purchasing decisions is inconclusive. As consumers are becoming better educated and have faster access to information, blind faith in celebrity endorsement is beginning to wane. They will be attracted to a brand because of a celebrity but they will quickly move away if the product does not perform. It’s the quality of your product that will keep consumers coming back, not a celebrity link.
- 6. A brand needs to tell the consumer why a product makes sense for them as individuals and what problem they can solve with it, not solely rely on a real-life Barbie doll, athlete or pop-culture icon. If they can’t, their products will lose value over time and consumers will be the first ones to turn their backs.

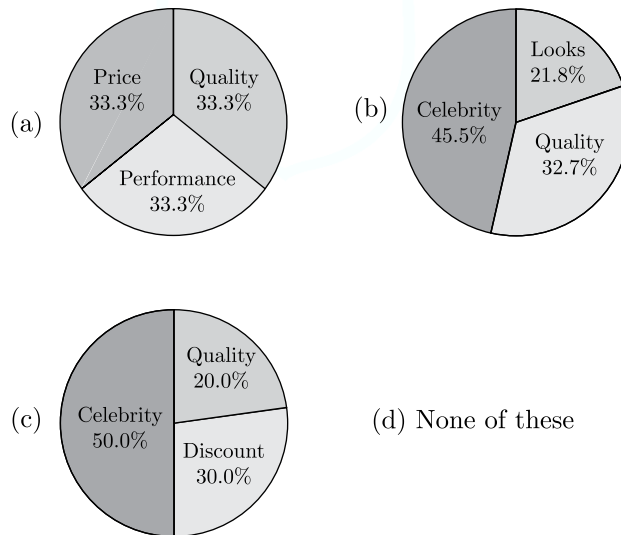


**CELEBRITY  
ENDORSEMENTS**



**Answer the following questions, based on the passage above.**

- i.** Complete the following sentence appropriately. 1  
Blind faith in celebrity endorsement is beginning to wane because \_\_\_\_\_.
- ii.** Fill in the blanks. 1  
From Paragraph 3 we can infer that people believe that purchasing a product that's promoted by their favourite celebrity will help them \_\_\_\_\_ (emulate/desire) their traits or \_\_\_\_\_ (attract/repel) similar people into their lives.
- iii.** Infer one reason for the following, based on information in Paragraph 2. Answer in about 40 words. 2  
With celebrities vouching for promoting their products, brands can increase awareness, trust and familiarity.
- iv.** List any one advantage of social media in brand promotion. 1
- v.** On the basis of the figure, which age group can be said to be believing of the celebrity endorsement? 1
- vi.** Select the pie chart that appropriately depicts the needs of the customers that are well-informed and educated. 1



- vii.** List any 2 benefits of 'celebrity endorsement' as mentioned in paragraph 2 in about 40 words. 2
- viii.** Select the correct option to complete the following sentence. 1  
Consumers are no longer lured by celebrity endorsements because \_\_\_\_\_ (Paragraph 5)
- (a) celebrities are too busy to promote these brands and their products.
- (b) the brands are not collaborating with celebrities as they did earlier.
- (c) they do not like celebrities anymore.
- (d) they are more informed and will discontinue if the product lacks quality and does not perform.

**SECTION B - GRAMMAR & WRITING SKILLS**

**20**

**GRAMMAR**

**10**

**3. Complete ANY TEN of twelve of the following tasks, as directed.** **1 × 10 = 10**

**i.** Fill in the blank by choosing the correct option to complete the magazine article. 1

The status of women in India \_\_\_\_\_ a gradual change.

- (a) undergo (b) is undergoing  
 (c) undergoes (d) has undergone

**ii.** Read the conversation between a child and a balloon man. Complete the passage in the reported speech. 1

Child : I want a balloon, which I can release into the air.

Balloon man : Which colour do you want?

Child : Which colour will take me up with it?

A child told a balloon man that he wanted a balloon to which the balloon man asked \_\_\_\_\_. And the child then asked \_\_\_\_\_.

**iii.** Select the correct option to fill in the blank for the given narrative. 1

If you are nervous, \_\_\_\_\_ I speak to her?

- (a) shall (b) would  
 (c) can (d) could

**iv.** Select the option that identifies the error and supplies the correction for the following line, from a news report : 1

Ten labourers are killed and four injured when the van in which they are travelling rammed into a truck parked at Rampura crossing.

Option No.	Error	Correction
(a)	are	were
(b)	into	at
(c)	when	where
(d)	at	by

**v.** Complete the given sentence by filling in the blank with the correct option. 1

Joshua, with his members, \_\_\_\_\_ really well.

- (a) sing (b) singing  
 (c) have sung (d) sings

**vi.** Fill in the blank by using the correct form of the word in the bracket, for the given portion of a letter: 1

**Subject :** Increase of air pollution in East Hyderabad

Respected Sir/Ma'am,

I am writing to you \_\_\_\_\_ (bring) to your notice the increasing effect of air pollution in our neighbourhood and in the surrounding area.

**vii.** Report the dialogue between a policeman and a driver by completing the sentence: 1  
 Policeman : Why were you driving at such a high speed?  
 Driver : Sorry sir! The engine is not working properly.  
 Policeman : Come to the police station and bring your car.  
 The policeman asked the driver the reason for his high speed to which he replied \_\_\_\_\_.

**viii.** Identify the error in the given sentence from a book review and supply the correction. 1  
 Money is certainly necessary to survive. But is money the more important part of life?

Use the given format for your response:

Error	Correction

**ix.** Sushila shared some information with Uma about a visit to a zoo. Report Uma’s question. 1  
 Did you see the Royal Bengal Tiger?

**x.** Identify the error in the given sentence and supply the correction. 1  
 You could not disturb him during his work.

Use the given format for your response.

Error	Correction

**xi.** Select the correct option to complete the narration of the dialogue between a mother and son: 1  
 Mother : What career do you want to choose in life?  
 Son : I want to become a doctor and serve my fellow beings.  
 The mother asked her son what career he wanted to choose in life, to which the son replied \_\_\_\_\_.  
 (a) that he wanted to become a doctor and serve his fellow beings.  
 (b) that he wants to become a doctor and serve his fellow beings.  
 (c) that he wants to be a doctor  
 (d) that I want to become a doctor and serve my fellow beings.

**xii.** Identify the error in the given sentence and supply the correction. 1  
 My writing is better than those of my friend.

Use the given format for your response.

Error	Correction

## WRITING

10

*Note : All details presented in the questions are imaginary and created for assessment purpose.*

**4. Attempt ANY ONE from A and B given below.**

**5**

- A.** You are Amit Kapoor, resident of 43/9, Shyam Enclave, Delhi. You visited Manali with your family during the summer vacation. You had two double suites at Lake View resort. Your stay at the hotel fell far short of the description in the brochure. Write a letter of complaint to the Customer Service Department to refund for your hotel stay.

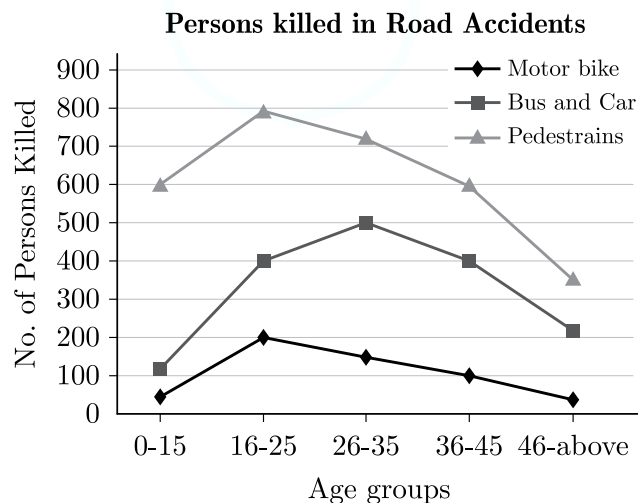
**Or**

- B.** Your music academy is planning to organise musical shows next month on the occasion of Janmashtmi. You are Minakshi/Pavan, the band leader of Sargam Music Academy, 55, Dwarka, Ahmedabad. You require some musical instruments for the smooth running of the events. Write a letter to the Store Manager, M/s. Sangeet Instruments, Daya Nagar, Ahmedabad placing an order for the specific instruments required by you.

**5. Attempt ANY ONE from A and B given below.**

**5**

- A.** A line graph is given below. The graph shows the number of persons of different age groups killed in accidents. Analyse the given data in an analytical paragraph of 100-120 words.



**Or**

- B.** Read the following excerpt from a speech by Malala Yousafzai in her address to the United Nations, July 2013.

The wise saying, “A pen is mightier than a sword” was true. The extremists are afraid of books and pens. The power of education frightens them. They are afraid of women. The power of the voice of women. Write a paragraph to analyse the given argument.

You could think about what alternative explanations might weaken the given conclusion and include rationale/evidence that would strengthen/counter the given argument.

## SECTION C - LITERATURE

40

- 6. Read the given extracts and answer the questions for ANY ONE of the two, given. 5**
- A.** “It’s me! It’s my Great and Mighty Balloon Brain. The Earthlings have seen me, and they’re after me. “Had a great fail”.... That means they plan to capture Mars Central Control and me! It’s an invasion of Mars! Noodle, prepare a space capsule for me. I must escape without delay. Space people, you must leave Earth at once, but be sure to remove all traces of your visit. The Earthlings must not know that I know”  
(*The Book that Saved the Earth*)
- i.** State any one inference about the speaker from the given context. 1  
It’s an invasion of Mars!’
- ii.** State TRUE or FALSE. 1  
Think Tank was worried about his ‘Great and Mighty Balloon Brain’ and thought that the earthlings would catch him because of this. This thought matches none of the options given below.  
(a) It was a hypothesis.  
(b) Think tank’s thought was based on an assumption.  
(c) Think Tank’s premise was incorrect.  
(d) This is not a valid theory.
- iii.** Elaborate in about 40 words the irony in the statement. 2  
“Had a great fail”.... That means they plan to capture Mars Central Control and me!’ with reference to the extract.
- iv.** Which rhyme would correctly substitute ‘signs’ in the given sentence from the extract? 1  
No signs of Jewish worship have been found at Ostia, but at Portus a considerable number of Jewish inscriptions in Greek have come to light.

Or

- B.** The creature that emerged from this sack on to the spacious tiled floor of the Consulate bedroom, resembled most of all a very small medievally-conceived, dragon. From the head to the tip of the tail he was coated with symmetrical pointed scales of mud armour, between whose tips was visible soft velvet fur like that of a chocolate-brown mole. He shook himself and I half expected a cloud of dust, but in fact, it was not for another month that I managed to remove the last of the mud and see the otter, as it were, in his true colours.  
(*Mijbil the Otter*)
- i.** Pick the option that classifies (F) Fact from (O) opinion. 1
1. I think the otter was caked with mud, initially.
  2. I feel he was a fine pet for the author.
  3. Oh come on, his fur was like that of a mole.
  4. Let’s not forget the otter needed to be cleaned for a month.
- (a) F 1 and 3, O 2 and 4 (b) F 2 and 3, O 1 and 4  
(c) F 1 and 4, O 2 and 3 (d) F 1 and 2, O 3 and 4
- ii.** What do these words reveal about the author’s personality? Answer in about 40 words. 2  
‘But in fact, it was not for another month that I managed to remove the last of the mud and see the otter, as it were, in his true colours.



- iii. Study the statement, 'From the head to the tip of the tail he was coated with symmetrical pointed scales...' In which of the options given below, the meaning of the word coated as used in the statement has been used? 1
- (a) Roll the potato wedges in crumbs and fry.
- (b) His tongue is layered yellow due to long sickness.
- (c) My shoes were covered with mud after a long walk.

- iv. The meaning of the word armour in, 'From the head to the tip of the tail he was coated with symmetrical pointed scales of mud armour' is \_\_\_\_\_. 1

**7. Read the given extracts and answer the questions for ANY ONE of the two, given. 5**

**A.** An ultimate shaking grief fixes the boy  
As he stands rigid, trembling, staring down  
All his young days into the harbour where  
His ball went.

*(The Ball Poem)*

- i. Fill the blank with one word. 1  
The poet establishes the dark mood of the boy and the sad atmosphere that is reflected in the choice of words : 'rigid,' trembling,' and \_\_\_\_\_.
- ii. What themes are explored by the poet John Berryman in the poem 'The Ball Poem'? 1
- iii. The boy's reaction to the loss of the ball shows that \_\_\_\_\_. 1
- (a) he would never feel happy again
- (b) he would never play with another ball
- (c) he would ask for a new ball
- (d) he was very attached to the lost ball and was very upset about losing it.
- iv. Comment on the poet's use of symbolism in these lines. 2

**Or**

**B.** (There is a languid, emerald sea,  
where the sole inhabitant is me-  
a mermaid, drifting blissfully.)

*(Amanda!)*

- i. Complete the sentence with the appropriate option. 1  
"There is a languid, emerald sea,  
where the sole inhabitant is me"  
The poet has used \_\_\_\_\_ poetic device in the given lines.
- (a) Assonance (b) Personification
- (c) Enjambment (d) Synecdoche
- ii. Comment on the imagery that the poet creates in these lines in about 40 words. 2
- iii. Why does Amanda want to be sole inhabitant of sea? 1
- iv. Why is this stanza given within brackets in the poem? 1

8. Answer ANY FOUR of the following five questions, in about 40-50 words.  $4 \times 3 = 12$

- i. What saddened Valli on her first journey by bus? How did it affect her? 3  
(*Madam Rides the Bus*)
- ii. Explain the symbols used in the poem "Fire and Ice" by Robert Frost. 3
- iii. "You seem to have done your homework before coming,". Who has done the homework and why is it so impressive? 3  
(*Glimpses of India*)
- iv. Describe the pirate who comes through the window? What do all of them do when the pirate comes? 3  
(*The Tale of Custard the Dragon*)
- v. 'Sympathy and kindness are human virtues'. Write a character sketch of the postmaster with reference to these human virtues. 3  
(*A Letter to God*)

9. Answer ANY TWO of the following three questions, in about 40-50 words.  $2 \times 3 = 6$

- i. Why is Horace described as good and respectable, but not completely honest? 3  
(*A Question of Trust*)
- ii. Why was the entire staff of Mrs. Pumphrey at work while Tricki was being taken to the hospital? 3  
(*A Triumph of Surgery*)
- iii. Describe the internal conflict in Hari Singh's mind before the theft. 3  
(*The Thief's Story*)

10. Answer ANY ONE of the following two questions, in about 100-120 words.  $1 \times 6 = 6$

- A. Nelson Mandela and Carl Sandburg both described the arrival of things that were inevitable to stop democracy and fog, respectively. Assume that they both discuss their viewpoints.  
Write this conversation as per your understanding of Nelson Mandela and Fog. You may begin like this:  
Mandela : I could feel the change in weather of South Africa's political environment when our voice became united against apartheid.  
Sandburg : And I could sense the literal change in weather with the arrival of fog. Some things have way of announcing their coming.

Or

- B. "I was very happy to go behind the strange aeroplane like an obedient child."  
Analysing the message of newfound hope in the given quote by the pilot (*The Black Aeroplane*), how can we say the feeling was mutual regarding the poet's upliftment of the mood (*Dust of Snow*)?  
Also, evaluate how both situations were similar or different.

11. Answer ANY ONE of the following two questions, in about 100-120 words.  $1 \times 6 = 6$

- A. Give the character-sketch of Matilda. (*The Necklace*)

Or

- B. "A good education can change anyone. A good teacher can change everything." Discuss this with reference to Bholi.

निर्धारित समय- 3 घंटे

पूर्णांक - 80

सामान्य निर्देश-

1. इस प्रश्नपत्र में दो खंड हैं- खंड 'अ' और 'ब'।
2. खंड 'अ' में उपप्रश्नों सहित 45 वस्तुपरक प्रश्न पूछे गए हैं। दिए गए निर्देशों का पालन करते हुए कुल 40 प्रश्नों के उत्तर दीजिए।
3. खंड 'ब' में वर्णनात्मक प्रश्न पूछे गए हैं, आंतरिक विकल्प भी दिए गए हैं।
4. निर्देशों को बहुत सावधानी से पढ़िए और उनका पालन कीजिए।
5. दोनों खंडों के कुल 18 प्रश्न हैं। दोनों खंडों के प्रश्नों के उत्तर देना अनिवार्य है।
6. यथासभव दोनों खंडों के प्रश्नों के उत्तर क्रमशः लिखिए।

### खंड-अ (वस्तुपरक प्रश्न)

1. निम्नलिखित गद्यांश को ध्यानपूर्वक पढ़कर इसके आधार पर सर्वाधिक उपयुक्त उत्तर वाले विकल्प चुनकर लिखिए- (1 × 5 = 5)

समाज-कल्याण एक पुण्य कार्य है, इसके कारण लोग अमर हो जाते हैं तथा उन्हें सदियों तक याद किया जाता है। इसकी पूर्ण तथा सांगोपांग परिभाषा देते समय मतभेद हो सकता है, किंतु जहाँ तक इसके सार-तत्त्व को समझने की बात है, लोगों में एक प्रकार से सामान्य सहमति मालूम पड़ती है। इसका तात्पर्य एक व्यक्तिगत सेवा से है, जो विशेष प्रकार की न होकर सामान्य प्रकार की होती है। इसका उद्देश्य किसी ऐसे व्यक्ति की सहायता करना है, जो असमर्थता की भावना से दुःखी होने पर भी अपने जीवन का सर्वोत्तम सदुपयोग करना चाहता है अथवा उन कठिनाइयों पर विजयी होना चाहता है, जो उसे पराजित कर चुकी हैं अथवा पराजय की आशंकाएँ उत्पन्न करती हैं। समाज-कल्याण की भावना दुर्बल की सहायता करती है तथा अपरिवर्तनीय स्थितियों के साथ संबंध सुधारने या सामंजस्य स्थापित करने का प्रयत्न करती है। इसके सर्वोच्च आदर्शों का सही-सही निरूपण स्वास्थ्य-मंत्रालय के एक परिपत्र द्वारा निर्दिष्ट वाक्य में किया गया है, जिसका संबंध विकलांगों के कल्याण से है। इसके अनुसार, कल्याणकारी सेवाओं का उद्देश्य यह सुनिश्चित करना है कि "सभी विकलांग व्यक्तियों को चाहे उनकी अक्षमता कुछ भी हो, सामुदायिक जीवन में हाथ बँटाने तथा उसके विकास में योगदान देने के लिए अधिक-से अधिक अवसर दिए जाएँगे, ताकि उनकी क्षमताओं का पूर्ण क्रियान्वयन हो सके, उनका आत्मविश्वास जाग सके तथा उनके सामाजिक संपर्क मजबूत बन सकें।"

- (1) निम्नलिखित कथन (A) तथा कारण (R) को ध्यानपूर्वक पढ़िए। उसके बाद दिए गए विकल्पों में से कोई एक सही विकल्प चुनकर लिखिए।

कथन (A) : समाज कल्याण की भावना दुर्बल व्यक्ति की सहायता करती है

कारण (R) : समाज-कल्याण समाज के पतन में योगदान देता है

(क) कथन (A) तथा कारण (R) दोनों गलत हैं

(ख) कथन (A) गलत है, लेकिन कारण (R) सही है

(ग) कथन (A) सही है लेकिन कारण (R) उसकी गलत व्याख्या करता है

(घ) कथन (A) और कारण (R) दोनों सही हैं तथा कारण (R), कथन (A) की सही व्याख्या करता है

- (2) "उनका आत्मविश्वास जाग सके तथा उनके सामाजिक संपर्क मजबूत बन सकें।" वाक्य में 'उनका' शब्द प्रयुक्त हुआ है

(क) केवल दृष्टिहीन व्यक्तियों के लिए

(ख) केवल दुर्बल व्यक्तियों के लिए

(ग) सभी विकलांग व्यक्तियों के लिए

(घ) सभी संपन्न व्यक्तियों के लिए

- (3) निम्नलिखित में से कौन-सा शब्द गद्यांश में दिए गए 'निरूपण' शब्द के सही अर्थ को दर्शाता है?

(क) अवक्षेपण

(ख) समीक्षा

(ग) प्रवंचना

(घ) अन्वेषण

- (4) स्वास्थ्य मंत्रालय ने अपने परिपत्र में समाज-कल्याण के लिए जो लक्ष्य निर्धारित किया है, वह है  
 (क) विकलांग व्यक्तियों को अधिक-से-अधिक अवसर देना (ख) उनकी क्षमताओं का पूर्ण क्रियान्वयन करना  
 (ग) उनमें आत्मविश्वास जगाना (घ) उपर्युक्त सभी
- (5) निम्नलिखित में से किस कथन को गद्यांश की सीख के आधार पर कहा जा सकता है?  
 (क) समाज के सक्षम वर्ग का कल्याण करना चाहिए (ख) समाज कल्याण पराजय की आशंका उत्पन्न करता है  
 (ग) हमें समाज कल्याण के लिए निरंतर प्रयत्न करने चाहिए (घ) सामुदायिक जीवन में हाथ बँटाना चाहिए

2. निम्नलिखित गद्यांश को ध्यानपूर्वक पढ़कर इसके आधार पर सर्वाधिक उपयुक्त उत्तर वाले विकल्प चुनकर लिखिए- (1 × 5 = 5)

हम सब इस बात को भली प्रकार जानते हैं कि समय परिवर्तनशील है, जो आज हमारे साथ नहीं हैं, कल हमारे साथ होंगे और हम अपने दुःख और असफलता से मुक्ति पा लेंगे, यह विचार ही हमें सहजता प्रदान कर सकता है। हम दूसरे की संपन्नता, ऊँचा पद और भौतिक साधनों की उपलब्धता देखकर विचलित हो जाते हैं कि यह उसके पास तो हैं, किंतु हमारे पास नहीं है, वह हमारे विचारों की गरीबी का प्रमाण है और यही बात अंदर विकट असहज भाव का संचालन करती है। जीवन में सहजता का भाव न होने के कारण से अधिकतर लोग हमेशा ही असफल होते हैं। सहज भाव लाने के लिए हमें नियमित रूप से योगासन-प्राणायाम और ध्यान करने के साथ-साथ ईश्वर का स्मरण अवश्य करना चाहिए। इसमें हमारे तन-मन और विचारों के विकार बाहर निकलते हैं और तभी हम सहजता के भाव का अनुभव कर सकते हैं। याद रखने की बात है कि हमारे विकार ही हमारे अंदर असहजता का भाव उत्पन्न करते हैं। ईर्ष्या-द्वेष और परनिंदा जैसे गुण हम अनजाने में ही अपना लेते हैं और अंततः जीवन में हर पल असहज होते हैं। उससे बचने के लिए आवश्यक है कि हम अध्यात्म के प्रति अपने मन और विचारों का रुझान रखें।

- (1) 'विचारों की गरीबी' से क्या तात्पर्य है?  
 (क) दूसरों की संपन्नता से विचलित होना (ख) दूसरों के ऊँचे पद से विचलित होना  
 (ग) (क) और (ख) दोनों (घ) योगासन से विचलित होना
- (2) निम्नलिखित कथन (A) तथा कारण (R) को ध्यानपूर्वक पढ़िए। उसके बाद दिए गए विकल्पों में से कोई एक सही विकल्प चुनकर लिखिए।  
**कथन (A) :** ईर्ष्या, द्वेष और परनिंदा जैसे गुण हमें असहज बनाते हैं।  
**कारण (R) :** सहजता का भाव रखने वाले लोग जीवन में हमेशा असफल होते हैं।  
 (क) कथन (A) तथा कारण (R) दोनों गलत हैं  
 (ख) कथन (A) गलत है, लेकिन कारण (R) सही है  
 (ग) कथन (A) सही है लेकिन कारण (R) उसकी गलत व्याख्या करता है  
 (घ) कथन (A) और कारण (R) दोनों सही हैं तथा कारण (R), कथन (A) की सही व्याख्या करता है
- (3) 'हमें नियमित रूप से योगासन प्राणायाम और ध्यान करने के साथ-साथ ईश्वर का स्मरण अवश्य करना चाहिए।' उपर्युक्त पंक्ति के माध्यम से लेखक जीवन में ..... लाने की प्रेरणा दे रहे हैं।  
 (क) सहज भाव (ख) असहज भाव  
 (ग) ईर्ष्या भाव (घ) द्वेष भाव
- (4) निम्नलिखित में से कौन-सा शब्द गद्यांश में दिए गए 'असहज' शब्द के सही अर्थ को दर्शाता है?  
 (क) परिपूर्ण (ख) विशृंखल  
 (ग) अतुल्य (घ) अनायास
- (5) निम्नलिखित में से किस कथन को गद्यांश की सीख के आधार पर कहा जा सकता है?  
 (क) संगठन में शक्ति होती है (ख) जीवन में सहजता का भाव आवश्यक है  
 (ग) कर भला हो भला (घ) कोई भी निर्णय लेने से पहले सोचना चाहिए

3. निर्देशानुसार 'पदबंध' पर आधारित पाँच बहुविकल्पीय प्रश्नों में से किन्हीं चार प्रश्नों के उत्तर दीजिए- (1 × 4 = 4)

- (1) 'बृजलाल गोयनका ने 200 आदमियों के साथ जुलूस निकाला।' रेखांकित पदबंध का भेद है  
 (क) क्रिया पदबंध (ख) सर्वनाम पदबंध  
 (ग) विशेषण पदबंध (घ) क्रिया विशेषण पदबंध

- (2) 'फैलते हुए प्रदूषण ने पंछियों को बस्तियों से भगाना शुरू कर दिया।' रेखांकित पदबंध का भेद है  
 (क) संज्ञा पदबंध (ख) सर्वनाम पदबंध  
 (ग) विशेषण पदबंध (घ) क्रिया पदबंध
- (3) समाज के पास अगर शाश्वत मूल्यों जैसा कुछ है तो वह आदर्शवादी लोगों का ही दिया हुआ है।' रेखांकित पदबंध का भेद है  
 (क) संज्ञा पदबंध (ख) सर्वनाम पदबंध  
 (ग) विशेषण पदबंध (घ) क्रिया-विशेषण पदबंध
- (4) विशेषण पदबंध का उदाहरण छाँटिए  
 (क) उसने ततौरा को तरह-तरह से अपमानित किया।  
 (ख) शुद्ध आदर्श भी शुद्ध सोने के जैसे ही होते हैं  
 (ग) कभी मेरी लाइब्रेरी में घुसकर कबीर या मिर्जा गालिब को सताने लगते हैं  
 (घ) हमारे जीवन की रफ्तार बढ़ गई है
- (5) 'आग और पानी के देवता भी उसके दास थे, मगर उसका अंत क्या हुआ?' इस वाक्य में संज्ञा पदबंध है  
 (क) आग और पानी के देवता (ख) देवता भी उसके दास थे  
 (ग) उसका अंत क्या हुआ? (घ) दास थे, मगर उसका

4. निर्देशानुसार 'रचना के आधार पर वाक्य भेद' पर आधारित पाँच बहुविकल्पीय प्रश्नों में से किन्हीं चार प्रश्नों के उत्तर दीजिए- (1 × 4 = 4)

- (1) 'मोनुमेंट के पास जैसा प्रबंध भोर में था वैसा करीब एक बजे न रहा।' रचना के आधार पर वाक्य भेद है  
 (क) सरल वाक्य (ख) संयुक्त वाक्य  
 (ग) मिश्र वाक्य (घ) विधानवाचक वाक्य
- (2) 'पुलिस भी अपनी पूरी ताकत से शहर में गश्त देकर प्रदर्शन कर रही थी।' रचना के आधार पर वाक्य भेद है  
 (क) सरल वाक्य (ख) संयुक्त वाक्य  
 (ग) मिश्र वाक्य (घ) सामान्य वाक्य
- (3) कॉलम 1 को कॉलम 2 के साथ सुमेलित कीजिए और सही विकल्प चुनकर लिखिए-

	कॉलम 1		कॉलम 2
(1)	कलाकार का यह कर्तव्य भी है कि वह उपभोक्ता की रुचियों का परिष्कार करने का प्रयत्न करे।	(i)	सरल वाक्य
(2)	शैलेंद्र ने राजकपूर जैसे स्टार को 'हीरामन' बना दिया था।	(ii)	संयुक्त वाक्य
(3)	चींटियों ने उनके लिए ईश्वर से दुआ की और सुलेमान अपनी मंजिल की ओर बढ़ गए।	(iii)	मिश्र वाक्य

विकल्प

- (क) 1-iii, 2-i, 3-ii (ख) 1-ii, 2-iii, 3-i  
 (ग) 1-ii, 2-i, 3-iii (घ) 1-iii, 2-ii, 3-i
- (4) 'रीति के अनुसार, यह आवश्यक था कि दोनों एक ही गाँव के हों।' इस वाक्य का सरल वाक्य होगा  
 (क) जैसे कि रीति के अनुसार, यह आवश्यक था और दोनों एक ही गाँव के हों  
 (ख) रीति के अनुसार, दोनों का एक ही गाँव का होना आवश्यक था  
 (ग) दोनों एक ही गाँव के हों और रीति के अनुसार यह आवश्यक था  
 (घ) जहाँ रीति के अनुसार, यह आवश्यक था, वहाँ दोनों एक ही गाँव के हों
- (5) निम्नलिखित वाक्यों में से मिश्र वाक्य है  
 (क) नूह ने दुःखी होकर उसकी बात सुनी और मुद्दत तक रोते रहे  
 (ख) भाई साहब उपदेश देने की कला में निपुण थे  
 (ग) जीवन में पहली बार ऐसा हुआ कि मैं इस तरह विचलित हो गया  
 (घ) शैलेंद्र ने राजकपूर की भावनाओं को शब्द दिए हैं।

5. निर्देशानुसार 'समास' पर आधारित पाँच बहुविकल्पीय प्रश्नों में से किन्हीं चार प्रश्नों के उत्तर दीजिए- (1 × 4 = 4)

- (1) 'मुखारविंद' समस्तपद कौन-से समास का उदाहरण है?  
 (क) द्विगु समास (ख) कर्मधारय समास  
 (ग) तत्पुरुष समास (घ) बहुव्रीहि समास
- (2) 'शाखामृग' समस्तपद का विग्रह होगा  
 (क) शाखाओं पर दौड़ने वाला मृग (ख) शाखा और मृग  
 (ग) शाखा रूपी मृग (घ) शाखाओं के समान है जो मृग
- (3) निम्नलिखित युग्मों पर विचार कीजिए

	समस्तपद		समास
(i)	त्रिमूर्ति	(i)	द्वंद्व समास
(ii)	दशानन	(ii)	बहुव्रीहि समास
(iii)	आजन्म	(iii)	अव्ययीभाव समास
(iv)	देशभक्ति	(i)	कर्मधारय समास

उपर्युक्त युग्मों में से कौन-से सही सुमेलित हैं?

- (क) (i) और (ii) (ख) (ii) और (iii)  
 (ग) (ii) और (iv) (घ) (iii) और (iv)
- (4) 'तुलसीकृत' का सही समास विग्रह व समास क्या होगा?  
 (क) तुलसी द्वारा रचित - तत्पुरुष समास (ख) तुलसी के लिए रचित - तत्पुरुष समास  
 (ग) तुलसी की रचित - कर्मधारय समास (घ) तुलसी में रचित - अव्ययीभाव समास
- (5) 'चंद्रशेखर' का समास विग्रह एवं भेद होगा  
 (क) चंद्र के समान शिखर है जिसका अर्थात् विष्णु - बहुव्रीहि समास  
 (ख) चंद्र है शिखर पर जिसके वह अर्थात् शिव - बहुव्रीहि समास  
 (ग) चंद्रमा और शेखर - द्वंद्व समास  
 (घ) चंद्रमा के समान ऊँचा शिखर - बहुव्रीहि समास

6. निर्देशानुसार 'मुहावरे' पर आधारित छह बहुविकल्पीय प्रश्नों में से किन्हीं चार प्रश्नों के उत्तर दीजिए- (1 × 4 = 4)

- (1) व्यापारी हमेशा ..... के लिए कार्य करते हैं। उचित मुहावरे से रिक्त स्थान की पूर्ति कीजिए  
 (क) काफूर होने (ख) उड़न छू होने  
 (ग) उन्नीस बीस होने (घ) पौ बारह होने
- (2) जब धर्मवीर की करतूतों की पोल खुली तो वह .....। उपयुक्त विकल्प द्वारा रिक्त स्थान की पूर्ति कीजिए  
 (क) फरिश्ता हो गया (ख) पानी-पानी हो गया  
 (ग) मीठी छुरी हो गया (घ) राई का पहाड़ हो गया
- (3) मुहावरे और अर्थ के उचित मेल वाले विकल्प का चयन कीजिए  
 (क) गाँठ पड़ना - स्थायी रूप से याद रखना (ख) लोहे के चने चबाना - मूर्खतापूर्ण कार्य करना  
 (ग) दाल न गलना - हैरान होना (घ) आड़े हाथों लेना - कठोरता से पेश आना
- (4) 'बना बनाया काम बिगाड़ देना' अर्थ के लिए सही मुहावरा है  
 (क) टाँग अड़ाना (ख) आँखों से बोलना  
 (ग) गुड़ गोबर कर देना (घ) दो से चार बनाना
- (5) 'अनदेखा कर देना' अर्थ के लिए उपयुक्त मुहावरा है  
 (क) उल्टी गंगा बहाना (ख) आँखें चुरा लेना  
 (ग) आँच न आने देना (घ) आँखों पर पर्दा पड़ना

- (6) पवन तो निपट मूर्ख है, उसे कितना भी समझा लो उसकी समझ में कुछ नहीं आता है। रेखांकित अंश के लिए कौन-सा मुहावरा प्रयुक्त करना उचित रहेगा?
- (क) नाक का बाल (ख) लकीर का फकीर  
(ग) काठ का उल्लू (घ) कोल्हू का बैल

7. निम्नलिखित पद्यांश को पढ़कर पूछे गए प्रश्नों के उत्तर के लिए सही विकल्प का चयन कीजिए- (1 × 5 = 5)

खींच दो अपने खूँ से जमीं पर लकीर  
इस तरफ आने पाए न रावन कोई  
तोड़ दो हाथ अगर हाथ उठने लगे  
छू न पाए सीता का दामन कोई  
राम भी तुम, तुम्हीं लक्ष्मण साथियों  
अब तुम्हारे हवाले वतन साथियों।

- (1) 'खूँ से जमीं पर लकीर खींचने' से क्या तात्पर्य है?
- (क) दुश्मन पर हमला करना (ख) सीमाओं पर रक्तपात करना  
(ग) बलिदान देकर भी शत्रु को रोकना (घ) मातृभूमि की रक्षा के लिए तत्पर रहना
- (2) कवि ने देशवासियों और सैनिकों को आत्मबलिदान से प्रेरणा लेकर देश की रक्षा के लिए सदा तैयार रहने का संदेश दिया है। इससे ज्ञात होता है कि कवि पक्षधर हैं—
- (क) स्वामी भक्ति के (ख) देशभक्ति के  
(ग) ईशनिंदा के (घ) क्रमान्वय के
- (3) 'सीता का दामन' किसे कहा गया है?
- (क) भारतीय सांस्कृतिक परंपरा को (ख) देवी-देवताओं की मर्यादा को  
(ग) देश के स्वाभिमान को (घ) मातृभूमि के सम्मान को
- (4) 'राम भी तुम, तुम्हीं लक्ष्मण साथियों' कथन से कवि का संकेत किस ओर है?
- (क) तुम्हें राम भी बनना है और लक्ष्मण भी  
(ख) तुम्हें नारी के सम्मान की रक्षा भी करनी है और मर्यादा की भी  
(ग) तुम्हें युद्ध भी करना है और रक्षा भी  
(घ) तुम्हें भारतीयता को भी बचाना है और सीमाओं को भी
- (5) निम्नलिखित वाक्यों को ध्यानपूर्वक पढ़िए
- (1) जीवन में जिंदा रहने के अनेक कारण मिल जाते हैं  
(2) देश की रक्षा के लिए सदैव तैयार रहना चाहिए  
(3) ईश्वर में अपना विश्वास कभी कमजोर नहीं होने देना चाहिए  
(4) राम और लक्ष्मण मर्यादा रक्षकों के प्रतीक हैं  
(5) हर वीर सैनिक इस देश की सुरक्षा करना अपना कर्तव्य मानता है
- पद्यांश से मेल खाते वाक्यों के लिए उचित विकल्प चुनिए
- (क) 1, 2 और 3 (ख) 1, 3 और 5  
(ग) 2, 3 और 4 (घ) 2, 4 और 5

8. निम्नलिखित प्रश्नों के उत्तर देने के लिए उचित विकल्प का चयन कीजिए- (1 × 2 = 2)

- (1) 'अवलोक रहा है बार-बार नीचे जल में निज महाकार' से क्या आशय है?
- (क) अवलोक महाकार को बार-बार देख रहा है  
(ख) कवि जल को बार-बार निहार रहा है  
(ग) पर्वत नीचे फैले जल में अपने विशाल आकार को निहार रहा है  
(घ) परमात्मा नीचे जल में बार-बार देख रहा है

- (2) पोथी पढ़ने से व्यक्ति पंडित नहीं बन सकता, क्योंकि  
 (क) पंडित लोगों के मानने से बनते हैं, पोथी पढ़ने से नहीं  
 (ख) पोथी ज्ञान तो प्रदान करती है, परंतु हमारे आचरण को नहीं बदल सकती  
 (ग) पोथी साधारण व्यक्ति द्वारा लिखी होती है  
 (घ) पोथी हमें अच्छा मनुष्य नहीं बनाती

9. निम्नलिखित गद्यांश को पढ़कर पूछे गए प्रश्नों के उत्तर के लिए सही विकल्प का चयन कीजिए— (1 × 5 = 5)

कई वर्षों से बड़े-बड़े बिल्डर समंदर को पीछे धकेलकर उसकी जमीन को हथिया रहे थे। बेचारा समंदर लगातार सिमटता जा रहा था। पहले उसने अपनी फैली हुई टाँगें समेटीं, थोड़ा सिमटकर बैठ गया। फिर जगह कम पड़ी तो उकड़ूँ बैठ गया। फिर खड़ा हो गया...जब खड़े रहने की जगह कम पड़ी तो उसे गुस्सा आ गया। जो जितना बड़ा होता है, उसे उतना ही कम गुस्सा आता है, परंतु आता है तो रोकना मुश्किल हो जाता है और यही हुआ, उसने एक रात अपनी लहरों पर दौड़ते हुए तीन जहाजों को उठाकर बच्चों की नींद की तरह तीन दिशाओं में फेंक दिया। एक वली के समंदर के किनारे पर आकर गिरा, दूसरा बांद्रा में कार्टर रोड के सामने आँधे मुँह और तीसरा गेट-वे ऑफ इंडिया पर टूट-फूटकर सैलानियों का नजारा बना बावजूद कोशिश, वे फिर से चलने-फिरने के काबिल नहीं हो सके।

- (1) "पहले उसने अपनी फैली हुई टाँगें समेटीं, थोड़ा सिमटकर बैठ गया। फिर जगह कम पड़ी तो उकड़ूँ बैठ गया। फिर खड़ा हो गया। .. कथन के माध्यम से ज्ञात होती है

- (i) समुद्र की बेचारगी और लाचारी  
 (ii) समुद्र की ताकत और रौद्र रूप  
 (iii) समुद्र की अभिलाषा और आकांक्षाएँ  
 (iv) समुद्र की दार्शनिकता और समझदारी

- (क) केवल (i) (ख) (i) और (ii)  
 (ग) (i), (ii) और (iii) (घ) केवल (iv)

- (2) "उसने एक रात अपनी लहरों पर दौड़ते हुए तीन जहाजों को उठाकर बच्चों की नींद की तरह तीन दिशाओं में फेंक दिया।" उपर्युक्त कथन दर्शाता है समुद्र का .....

- (क) अभिमान (ख) अपनत्व  
 (ग) क्रोध (घ) सहनशीलता

- (3) 'पहले उसने अपनी फैली हुई टाँगें समेटीं' पंक्ति में 'उसने' शब्द किसके लिए प्रयुक्त हुआ है?

- (क) लेखक के लिए (ख) समुद्र के लिए  
 (ग) बच्चे के लिए (घ) सैलानी के लिए

- (4) 'जो जितना बड़ा होता है, उसे उतना ही कम गुस्सा आता है' यह पंक्ति किस संदर्भ में कही गई है?

- (क) सहनशीलता के (ख) प्रेम के  
 (ग) अपनत्व के (घ) अभिमान के

- (5) निम्नलिखित कथन (A) तथा कारण (R) को ध्यानपूर्वक पढ़िए। उसके बाद दिए गए विकल्पों में से कोई एक सही विकल्प चुनकर लिखिए

कथन (A) : समुद्र के किनारे निर्माण कार्यों के कारण समुद्र सिमटते जा रहे हैं।

कारण (R) : जनसंख्या वृद्धि के कारण स्थान का अभाव होता जा रहा है।

विकल्प

- (क) कथन (A) तथा कारण (R) दोनों गलत हैं  
 (ख) कथन (A) गलत है, लेकिन कारण (R) सही है  
 (ग) कथन (A) सही है, लेकिन कारण (R) उसकी गलत व्याख्या करता है  
 (घ) कथन (A) और कारण (R) दोनों सही हैं तथा कारण (R) कथन (A) की सही व्याख्या करता है



10. निम्नलिखित प्रश्नों के उत्तर देने के लिए उचित विकल्प का चयन कीजिए- (1 × 2 = 2)

(1) निम्नलिखित में से कौन-से वाक्य 'झेन की देन' पाठ से प्राप्त प्रेरणा को दर्शाते हैं?

- (i) सत्य केवल वर्तमान है, उसी में जीना चाहिए
- (ii) मनुष्य के लिए प्रगति बहुत आवश्यक है
- (iii) हमें प्रतिदिन चाय पीनी चाहिए
- (iv) मनुष्य को जीवन में अधिक तनाव नहीं लेना चाहिए

**विकल्प**

- |                        |                       |
|------------------------|-----------------------|
| (क) केवल (i)           | (ख) (i) और (iv)       |
| (ग) (i), (ii) और (iii) | (घ) (i), (ii) और (iv) |

(2) कर्नल कालिंज के हक्का-बक्का हो जाने का क्या कारण था?

- |                                |                                 |
|--------------------------------|---------------------------------|
| (क) सआदत अली के कारनामे सुनना  | (ख) कंपनी के सिपाहियों को देखना |
| (ग) वकील की हत्या की खबर सुनना | (घ) वजीर-अली की निडरता को देखना |

### खंड-ब (वर्णनात्मक प्रश्न)

11. निम्नलिखित प्रश्नों में से किन्हीं दो प्रश्नों के उत्तर लगभग 60 शब्दों में दीजिए- (3 × 2 = 6)

- (1) 'डायरी का एक पन्ना' पाठ के माध्यम से हमने स्वतंत्रता संग्राम के इतिहास के बारे में जाना। लेखक की डायरी का एक पन्ना भावी पीढ़ी को किस प्रकार प्रेरित करता है? इस पाठ से मिली सीख का वर्णन कीजिए।
- (2) 'तीसरी कसम के शिल्पकार शैलेंद्र' पाठ के माध्यम से हमने जाना कि व्यथा आदमी को पराजित नहीं करती, उसे आगे बढ़ने का संदेश देती है। इस पाठ से प्राप्त सीख का वर्णन कीजिए।
- (3) इस वर्ष आपने पाठ्यक्रम में एक पाठ पढ़ा है, जो हमें आदर्शवादी होने के साथ-साथ व्यावहारिक होने का संदेश भी देता है। कथन का मूल्यांकन करते हुए अपने विचार लिखिए।

12. निम्नलिखित प्रश्नों में से किन्हीं दो प्रश्नों के उत्तर लगभग 60 शब्दों में दीजिए- (3 × 2 = 6)

- (1) आपके द्वारा इस पाठ्यक्रम में पढ़ी गई किस कविता में कवि ने मनुष्य को मृत्यु से भयभीत न होने की प्रेरणा दी है और क्यों? कौन-से व्यक्ति मरकर भी अमर हो जाते हैं?
- (2) आपके पाठ्यक्रम में किस कविता में बादलों के उठने और वर्षा होने का चित्रण किया गया है? अपने शब्दों में वर्णन कीजिए।
- (3) कबीर की उद्धृत साखियों की भाषा की विशेषताएँ स्पष्ट कीजिए।

13. निम्नलिखित प्रश्नों में से किन्हीं दो प्रश्नों के उत्तर लगभग 60 शब्दों में दीजिए- (3 × 2 = 6)

- (1) 'एक रात उनके भाइयों ने वही रूप धारण कर लिया, जो रूप महंत और उनके सहपाठियों ने धारण किया था। हरिहर काका को महंत और अपने भाई एक ही श्रेणी के क्यों लगने लगे? तर्कसहित स्पष्ट कीजिए।
- (2) इन्हीं बातों से आकर्षित हो कुछ नौजवान भर्ती के लिए तैयार हो जाया करते। कभी-कभी हमें भी महसूस होता है कि हम भी फौजी जवानों से कम नहीं। धोबी की धुली वर्दी और पॉलिश किए बूट और जुराबों को पहने जब हम स्काउटिंग की परेड करते तो लगता हम फौजी ही हैं।  
वर्दी तथा परेड के उत्साह से लेखक को ऐसा क्यों लगता है कि वह भी एक फौजी है? 'सपनों के से दिन' पाठ के आधार पर स्पष्ट कीजिए।
- (3) इफ़न से मित्रता करना तथा उसकी दादी के प्रति टोपी का लगाव उसके परिवार वालों को पसंद नहीं था इफ़न से मित्रता करने के लिए उसके भाई मुन्नी बाबू ने भी घर में शिकायत करके उसकी पिटाई करवाई थी।  
टोपी ने अपने भाई मुन्नी बाबू के विषय में कौन-सा रहस्य छिपाकर रखा था तथा क्यों?

14. निम्नलिखित में से किसी एक विषय पर संकेत-बिंदुओं के आधार पर लगभग 100 शब्दों में अनुच्छेद लिखिए- (5 × 1 = 5)

(1) प्रदूषण : एक समस्या

- परिचय
- प्रदूषण के तत्त्व
- प्रदूषण के प्रकार
- प्रदूषण के कारण
- प्रदूषण के प्रभाव
- प्रदूषण को रोकने के उपाय

(2) दहेज प्रथा : एक अभिशाप

- सामाजिक समस्या
- रोकथाम के उपाय
- युवकों का कर्तव्य

(3) मन के हारे हार हैं मन के जीते जीत

- निराशा
- दृष्टिकोण परिवर्तन
- सकारात्मक सोच

15. (1) अस्पताल कर्मचारियों के सद्व्यवहार की प्रशंसा करते हुए मुख्य चिकित्सा अधिकारी को लगभग 100 शब्दों में पत्र लिखिए। (5 × 1 = 5)

अथवा

(2) आपकी बस्ती के पार्क में कई अनधिकृत खोमचे वालों ने डेरा डाल दिया है, उन्हें हटाने के लिए नगर-निगम अधिकारी को लगभग 100 शब्दों में पत्र लिखिए।

16. निम्नलिखित में से किसी एक विषय पर लगभग 60 शब्दों में सूचना लिखिए- (4 × 1 = 4)

(1) विद्यालय द्वारा चिकित्सा जाँच शिविर का आयोजन किया जा रहा है। स्वास्थ्य संगठन के सचिव होने के नाते कक्षा छठी से बारहवीं तक के सभी विद्यार्थियों को इसकी सूचना लगभग 60 शब्दों में तैयार कीजिए।

अथवा

(2) आपकी कॉलोनी में मरम्मत का कार्य होने जा रहा है। सचिव होने के नाते सभी सदस्यों को इसकी जानकारी देने व कार्य में सहयोग देने का अनुरोध करते हुए लगभग 60 शब्दों में सूचना जारी करें।

17. निम्नलिखित में से किसी एक विषय पर लगभग 40 शब्दों में विज्ञापन तैयार कीजिए- (3 × 1 = 3)

(1) अपने पुराने मकान को बेचने संबंधी विज्ञापन लगभग 40 शब्दों में तैयार कीजिए।

अथवा

(2) पुस्तक विक्रेता के लिए एक आकर्षक विज्ञापन लगभग 40 शब्दों में तैयार कीजिए।

18. (1) 'बुरे का फल बुरा ही मिलता है' विषय पर लघु कथा लगभग 100 शब्दों में लिखिए। (5 × 1 = 5)

अथवा

(2) समस्त औपचारिकताएँ पूर्ण करने पर भी आधार कार्ड न मिलने की शिकायत करते हुए संबंधित अधिकारी को लगभग 100 शब्दों में एक ई-मेल लिखिए।

## Class- X Exam - 2023-24

### Mathematics - Basic

**Time Allowed: 3 Hours**

**Maximum Marks : 80**

**General Instructions :**

1. This Question Paper has 5 Sections A-E.
  2. Section A has 20 MCQs carrying 1 mark each
  3. Section B has 5 questions carrying 02 marks each.
  4. Section C has 6 questions carrying 03 marks each.
  5. Section D has 4 questions carrying 05 marks each.
  6. Section E has 3 case based integrated units of assessment (04 marks each) with sub-parts of the values of 1, 1 and 2 marks each respectively.
  7. All Questions are compulsory. However, an internal choice in 2 Qs of 5 marks, 2 Qs of 3 marks and 2 Questions of 2 marks has been provided. An internal choice has been provided in the 2marks questions of Section E
  8. Draw neat figures wherever required. Take  $\pi = \frac{22}{7}$  wherever required if not stated.
- 

## Section - A

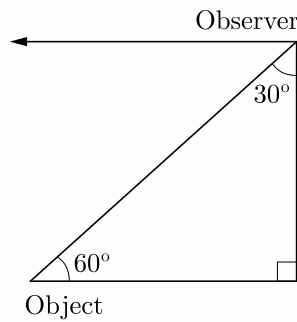
**Section A consists of 20 questions of 1 mark each.**

1. The area of the circle that can be inscribed in a square of side 6 cm is  
(a)  $36\pi \text{ cm}^2$  (b)  $18\pi \text{ cm}^2$   
(c)  $12\pi \text{ cm}^2$  (d)  $9\pi \text{ cm}^2$
2. The famous mathematician associated with finding the sum of the first 100 natural numbers is  
(a) Pythagoras (b) Newton  
(c) Gauss (d) Euclid
3. The point  $P$  on  $x$ -axis equidistant from the points  $A(-1, 0)$  and  $B(5, 0)$  is  
(a)  $(2, 0)$  (b)  $(0, 2)$   
(c)  $(3, 0)$  (d)  $(-3, 5)$
4. Volume of a spherical shell is given by  
(a)  $4\pi(R^2 - r^2)$  (b)  $\pi(R^3 - r^3)$   
(c)  $4\pi(R^3 - r^3)$  (d)  $\frac{4}{3}\pi(R^3 - r^3)$
5. In an AP, if  $a = 3.5$ ,  $d = 0$  and  $n = 101$ , then  $a_n$  will be  
(a) 0 (b) 3.5  
(c) 103.5 (d) 104.5

6. The distance between the points  $(a \cos \theta + b \sin \theta, 0)$ , and  $(0, a \sin \theta - b \cos \theta)$  is  
 (a)  $a^2 + b^2$  (b)  $a^2 - b^2$   
 (c)  $\sqrt{a^2 + b^2}$  (d)  $\sqrt{a^2 - b^2}$

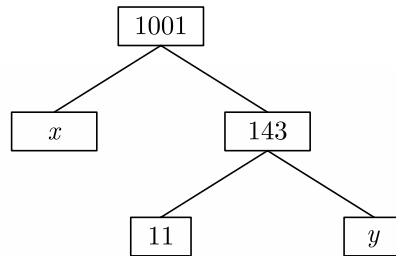
7. The pair of equations  $x + 2y + 5 = 0$  and  $-3x - 6y + 1 = 0$  has  
 (a) a unique solution  
 (b) exactly two solutions  
 (c) infinitely many solutions  
 (d) no solution

8. In the given figure, the positions of the observer and the object are mentioned, the angle of depression is



- (a)  $30^\circ$  (b)  $90^\circ$   
 (c)  $60^\circ$  (d)  $45^\circ$
9. If the difference of mode and median of a data is 24, then the difference of median and mean is  
 (a) 12 (b) 24  
 (c) 08 (d) 36
10. The father's age is six times his son's age. Four years hence, the age of the father will be four times his son's age. The present ages (in year) of the son and the father are, respectively.  
 (a) 4 and 24 (b) 5 and 30  
 (c) 6 and 36 (d) 3 and 24
11. If the sum of the zeroes of the quadratic polynomial  $kx^2 + 2x + 3k$  is equal to their product, then  $k$  equals  
 (a)  $\frac{1}{3}$  (b)  $-\frac{1}{3}$   
 (c)  $\frac{2}{3}$  (d)  $-\frac{2}{3}$
12. The probability of getting a bad egg in a lot of 400 is 0.035. The number of bad eggs in the lot is  
 (a) 7 (b) 14  
 (c) 21 (d) 28

13. The values of  $x$  and  $y$  in the given figure are



- (a) 7, 13 (b) 13, 7  
 (c) 9, 12 (d) 12, 9
14. If  $\sin \alpha = \frac{1}{2}$  and  $\cos \beta = \frac{1}{2}$ , then the value of  $(\alpha + \beta)$  is  
 (a)  $0^\circ$  (b)  $30^\circ$   
 (c)  $60^\circ$  (d)  $90^\circ$
15. It is given that,  $\Delta ABC \sim \Delta EDF$  such that  $AB = 5$  cm,  $AC = 7$  cm,  $DF = 15$  cm and  $DE = 12$  cm then the sum of the remaining sides of the triangles is  
 (a) 23.05 cm (b) 16.8 cm  
 (c) 6.25 cm (d) 24 cm
16.  $QP$  is a tangent to a circle with centre  $O$  at a point  $P$  on the circle. If  $\Delta OPQ$  is isosceles, then  $\angle OQR$  equals.  
 (a)  $30^\circ$  (b)  $45^\circ$   
 (c)  $60^\circ$  (d)  $90^\circ$
17. If  $\alpha$  and  $\beta$  are zeroes and the quadratic polynomial  $f(x) = x^2 - x - 4$ , then the value of  $\frac{1}{\alpha} + \frac{1}{\beta} - \alpha\beta$  is  
 (a)  $\frac{15}{4}$  (b)  $\frac{-15}{4}$   
 (c) 4 (d) 15
18. If the centre of a circle is  $(3, 5)$  and end points of a diameter are  $(4, 7)$  and  $(2, y)$ , then the value of  $y$  is  
 (a) 3 (b)  $-3$   
 (c) 7 (d) 4
19. **Assertion :** If one zero of poly-nominal  $p(x) = (k^2 + 4)x^2 + 13x + 4k$  is reciprocal of other, then  $k = 2$ .  
**Reason :** If  $(x - \alpha)$  is a factor of  $p(x)$ , then  $p(\alpha) = 0$  i.e.  $\alpha$  is a zero of  $p(x)$ .  
 (a) Both assertion (A) and reason (R) are true and reason (R) is the correct explanation of assertion (A).  
 (b) Both assertion (A) and reason (R) are true but reason (R) is not the correct explanation of assertion (A).  
 (c) Assertion (A) is true but reason (R) is false.  
 (d) Assertion (A) is false but reason (R) is true.

20. **Assertion :** The values of  $x$  are  $-\frac{a}{2}, a$  for a quadratic equation  $2x^2 + ax - a^2 = 0$ .  
**Reason :** For quadratic equation  $ax^2 + bx + c = 0$

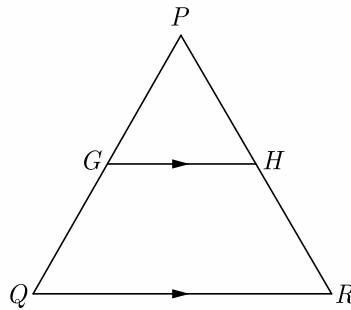
$$x = \frac{-b \pm \sqrt{b^2 - 4ac}}{2a}$$

- (a) Both assertion (A) and reason (R) are true and reason (R) is the correct explanation of assertion (A).  
 (b) Both assertion (A) and reason (R) are true but reason (R) is not the correct explanation of assertion (A).  
 (c) Assertion (A) is true but reason (R) is false.  
 (d) Assertion (A) is false but reason (R) is true.

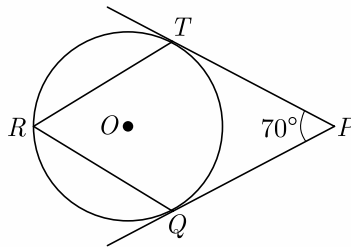
## Section - B

**Section B consists of 5 questions of 2 marks each.**

21. In the given figure,  $G$  is the mid-point of the side  $PQ$  of  $\Delta PQR$  and  $GH \parallel QR$ . Prove that  $H$  is the mid-point of the side  $PR$  or the triangle  $PQR$ .



22. In figure,  $O$  is the centre of a circle.  $PT$  are tangents to the circle from an external point  $P$ . If  $\angle TPQ = 70^\circ$ , find  $\angle TRQ$ .



23. Evaluate :  $\frac{\cos 45^\circ}{\sec 30^\circ} + \frac{1}{\sec 60^\circ}$

24. Find the arithmetic mean of the following frequency distribution :

$x_i$	3	4	5	7	10
$f_i$	3	4	8	5	10

**OR**

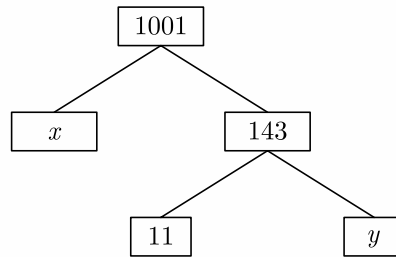
Given below is the distribution of weekly pocket money received by students of a class. Calculate the pocket money that is received by most of the students.

Pocket Money (in Rs.)	0-20	20-40	40-60	60-80	80-100	100-120	120-140
Number of students.	2	2	3	12	18	5	2

25.  $a$  and  $b$  are two positive integers such that the least prime factor of  $a$  is 3 and the least prime factor of  $b$  is 5. Then calculate the least prime factor of  $(a + b)$ .

**OR**

What are the values of  $x$  and  $y$  in the given figure ?



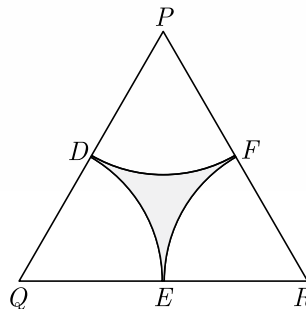
## Section - C

**Section C consists of 6 questions of 3 marks each.**

26. If in an AP, the sum of first  $m$  terms is  $n$  and the sum of its first  $n$  terms is  $m$ , then prove that the sum of its first  $(m + n)$  terms is  $-(m + n)$ .
27. Prove that  $\frac{\sin A - \cos A - 1}{\sin A + \cos A - 1} = \frac{1}{\sec A - \tan A}$
28. Find the area of minor segment of a circle of radius 14 cm, when its centre angle is  $60^\circ$ . Also find the area of corresponding major segment. Use  $\pi = \frac{22}{7}$ .

**OR**

In the given figure,  $\Delta PQR$  is an equilateral triangle of side 8 cm and  $D, E, F$  are centres of circular arcs, each of radius 4 cm. Find the area of shaded region. (Use  $\pi = 3.14$ ) and  $\sqrt{3} = 1.732$



29. The table below shows the daily expenditure on food of 25 households in a locality. Find the mean daily expenditure on food.

Daily expenditure (in ₹)	100-150	150-200	200-250	250-300	300-350
Number of households	4	5	12	2	2

30. If the distance of  $P(x, y)$  from  $A(6, 2)$  and  $B(-2, 6)$  are equal, prove that  $y = 2x$ .

**OR**

If  $(a, b)$  is the mid-point of the segment joining the points  $A(10, -6)$  and  $B(k, 4)$  and  $a - 2b = 18$ , find the value of  $k$  and the distance  $AB$ .

31. Find HCF and LCM of 16 and 36 by prime factorization and check your answer.

## Section - D

**Section D consists of 4 questions of 5 marks each.**

32. For Uttarakhand flood victims two sections A and B of class contributed Rs. 1,500. If the contribution of X-A was Rs. 100 less than that of X-B, find graphically the amounts contributed by both the sections.

**OR**

Draw the graph of the following equations:

$$2x - y = 1, \quad x + 2y = 13$$

Find the solution of the equations from the graph and shade the triangular region formed by the lines and the  $y$ -axis.

33. Prove that the parallelogram circumscribing a circle is a rhombus.
34. From the top of a 7 m high building the angle of elevation of the top of a tower is  $60^\circ$  and the angle of depression of its foot is  $45^\circ$ . Determine the height of the tower.

**OR**

A vertical tower stands on a horizontal plane and is surmounted by a flagstaff of height 5 m. From a point on the ground the angles of elevation of top and bottom of the flagstaff are  $60^\circ$  and  $30^\circ$  respectively. Find the height of the tower and the distance of the point from the tower. (take  $\sqrt{3} = 1.732$ )

35. Water is flowing at the rate of 15 km/hr through a cylindrical pipe of diameter 14 cm into a cuboidal pond which is 50 m long and 44 m wide. In what time the level of water in pond rise by 21 cm ?



## Section - E

**Case study based questions are compulsory.**

- 36.** Nidhi and Ria are very close friends. Nidhi's parents own a Maruti Alto. Ria's parents own a Toyota Liva. Both the families decide to go for a picnic to Somnath temple in Gujrat by their own cars.



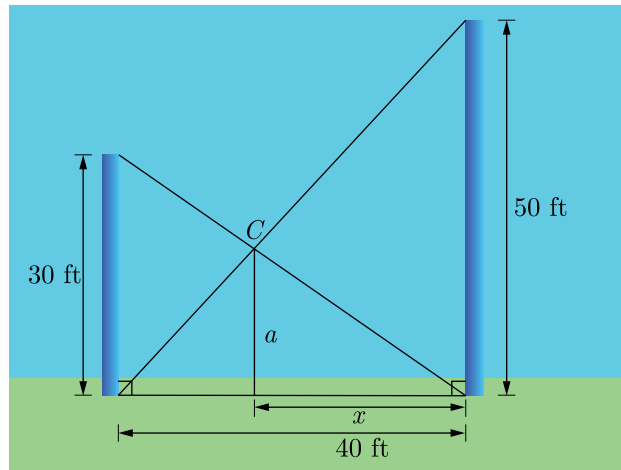
Nidhi's car travels  $x$  km/h while Ria's car travels 5 km/h more than Nidhi's car. Nidhi's car took 4 hrs more than Ria's car in covering 400 km.

- (i) What will be the distance covered by Ria's car in two hour?
- (ii) Write the quadratic equation that describe the speed of Nidhi's car?
- (iii) What is the the speed of Nidhi's car?

**OR**

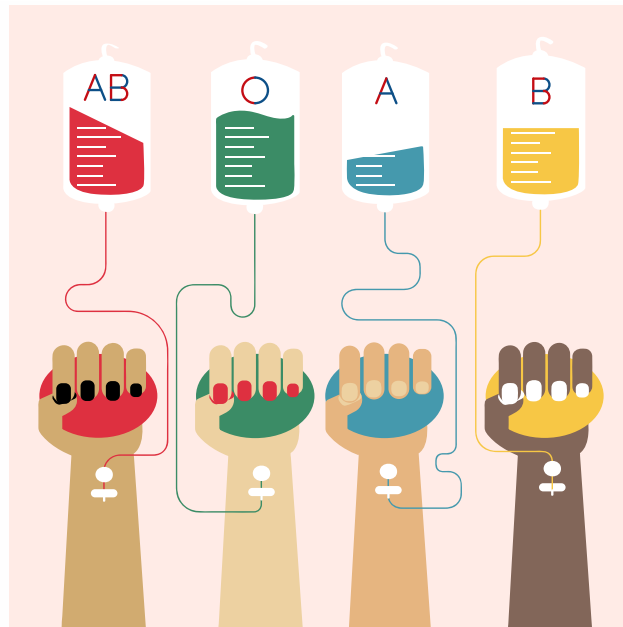
How much time did Ria take to travel 400 km?

- 37.** Two poles, 30 feet and 50 feet tall, are 40 feet apart and perpendicular to the ground. The poles are supported by wires attached from the top of each pole to the bottom of the other, as in the figure. A coupling is placed at  $C$  where the two wires cross.



- (i) What is the horizontal distance from  $C$  to the taller pole?
- (ii) How high above the ground is the coupling ?
- (iii) How far down the wire from the smaller pole is the coupling ?

38. Blood Group : Blood type or blood group is a medical term. It describes the type of blood a person has. It is a classification of blood based on the presence or absence of inherited antigenic substances on the surface of red blood cells (RBCs). Blood types predict whether a serious reaction will occur in a blood transfusion.



In a sample of 50 people, 21 had type O blood, 22 had type A blood, 5 had type B blood, and 2 had type AB blood. Set up a frequency distribution and find the following probabilities.

- (i) What is the probability that a person has type O blood ?
- (ii) What is the probability that a person has type A or type B blood ?
- (iii) What is the probability that a person has neither type A nor type O blood ?

**OR**

- (iv) What is the probability that a person does not have type AB blood ?

## Class- X Exam - 2023-24

### Mathematics - Standard

Time Allowed: 3 Hours

Maximum Marks : 80

**General Instructions :**

1. This Question Paper has 5 Sections A-E.
  2. Section A has 20 MCQs carrying 1 mark each.
  3. Section B has 5 questions carrying 02 marks each.
  4. Section C has 6 questions carrying 03 marks each.
  5. Section D has 4 questions carrying 05 marks each.
  6. Section E has 3 case based integrated units of assessment (04 marks each) with sub-parts of the values of 1, 1 and 2 marks each respectively.
  7. All Questions are compulsory. However, an internal choice in 2 Qs of 5 marks, 2 Qs of 3 marks and 2 Questions of 2 marks has been provided. An internal choice has been provided in the 2 marks questions of Section E.
  8. Draw neat figures wherever required. Take  $\pi = \frac{22}{7}$  wherever required if not stated.
- 

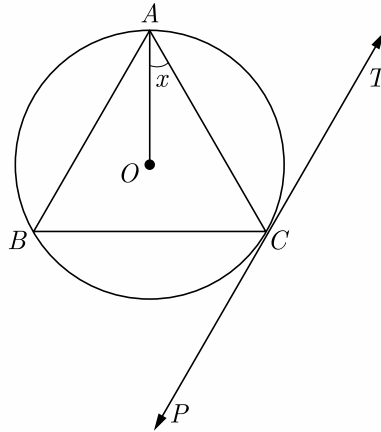
## Section - A

Section A consists of 20 questions of 1 mark each.

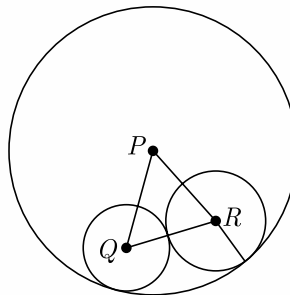
1. Ramesh buys a fish from a shop for his aquarium. The shopkeeper takes out one fish at random a tank containing 5 male fish and 9 female fish. Then, the probability that the fish taken out is a male fish, is  
(a)  $\frac{5}{13}$  (b)  $\frac{5}{14}$   
(c)  $\frac{6}{13}$  (d)  $\frac{7}{13}$
2. A quadratic polynomial, whose zeroes are  $-3$  and  $4$ , is  
(a)  $x^2 - x + 12$  (b)  $x^2 + x + 12$   
(c)  $\frac{x^2}{2} - \frac{x}{2} - 6$  (d)  $2x^2 + 2x - 24$
3. A number  $x$  is selected from the numbers 1, 2, 3 and then a second number  $y$  is randomly selected from the numbers 1, 4, 9 then the probability that the product  $xy$  of the two numbers will be less than 9 is  
(a)  $\frac{3}{7}$  (b)  $\frac{4}{9}$   
(c)  $\frac{5}{9}$  (d)  $\frac{7}{9}$
4. The value of  $c$  for which the pair of equations  $cx - y = 2$  and  $6x - 2y = 3$  will have is  
(a) 3 (b)  $-3$   
(c)  $-12$  (d) no value
5. If the common difference of an AP is 5, then what is  $a_{18} - a_{13}$ ?  
(a) 5 (b) 20  
(c) 25 (d) 30

6. The perimeters of two similar triangles are 25 cm and 15 cm respectively. If one side of the first triangle is 9 cm, then the corresponding side of second triangle is .....
- (a) 5.4 cm (b) 5.2 cm  
 (c) 4.9 cm (d) 5.1 cm

7. In the adjoining figure,  $PT$  is a tangent at point  $C$  of the circle.  $O$  is the circumference of  $\Delta ABC$ . If  $\angle ACP = 118^\circ$ , then the measure of  $\angle x$  is



- (a)  $28^\circ$  (b)  $32^\circ$   
 (c)  $42^\circ$  (d)  $38^\circ$
8. In the given figure, three circles with centres  $P$ ,  $Q$  and  $R$  are drawn, such that the circles with centres  $Q$  and  $R$  touch each other externally and they touch the circle with centre  $P$ , internally. If  $PQ = 10$  cm,  $PR = 8$  cm and  $QR = 12$  cm, then the diameter of the largest circle is:



- (a) 30 cm (b) 20 cm  
 (c) 10 cm (d) None of these
9. If  $\Delta ABC$  is right angled at  $C$ , then the value of  $\sec(A + B)$  is
- (a) 0 (b) 1  
 (c)  $\frac{2}{\sqrt{3}}$  (d) not defined
10. The quadratic equation  $x^2 + x - 5 = 0$  has
- (a) two distinct real roots (b) two equal real roots  
 (c) no real roots (d) more than 2 real roots

11. If  $x\sin^3\theta + y\cos^3\theta = \sin\theta\cos\theta$  and  $x\sin\theta = y\cos\theta$ , then  $x^2 + y^2$  is equal to  
 (a) 0 (b) 1/2  
 (c) 1 (d) 3/2
12. From the top of a 7 m high building the angle of elevation of the top of a cable tower is  $60^\circ$  and the angle of depression of its foot is  $45^\circ$ , then the height of the tower is  
 (a) 14.124 m (b) 17.124 m  
 (c) 19.124 m (d) 15.124 m
13. In a right angled  $\Delta ABC$  right angled at  $B$ , if  $P$  and  $Q$  are points on the sides  $AB$  and  $BC$  respectively, then  
 (a)  $AQ^2 + CP^2 = 2(AC^2 + PQ^2)$   
 (b)  $2(AQ^2 + CP^2) = AC^2 + PQ^2$   
 (c)  $AQ^2 + CP^2 = AC^2 + PQ^2$   
 (d)  $AQ + CP = \frac{1}{2}(AC + PQ)$
14. A circle artist is climbing a 20 m long rope, which is tightly stretched and tied from the top of a vertical pole to the ground, then the height of pole, if the angle made by the rope with the ground level is  $30^\circ$ , is  
 (a) 5 m (b) 10 m  
 (c) 15 m (d) 20 m
15. If the perimeter of a semi-circular protractor is 36 cm, then its diameter is  
 (a) 10 cm (b) 14 cm  
 (c) 12 cm (d) 16 cm
16. A right circular cylinder of radius  $r$  and height  $h$  (where,  $h > 2r$ ) just encloses a sphere of diameter  
 (a)  $r$  (b)  $2r$   
 (c)  $h$  (d)  $2h$
17. The mean and median of the data  $a$ ,  $b$  and  $c$  are 50 and 35 respectively, where  $a < b < c$ . If  $c - a = 55$ , then  $(b - a)$  is  
 (a) 8 (b) 7  
 (c) 3 (d) 5

18. For the following distribution

Marks	Number of Students	Marks	Number of students
Below 10	3	Below 40	57
Below 20	12	Below 50	75
Below 30	28	Below 60	80

The modal class is

- (a) 0-20 (b) 20-30  
 (c) 30-40 (d) 50-60

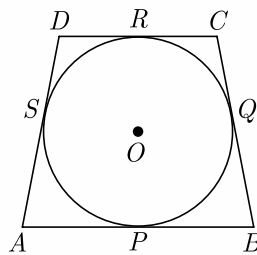
In the question number 19 and 20, a statement of Assertion (A) is followed by a statement of Reason (R). Choose the correction option.

19. **Assertion :** The roots of the quadratic equation  $x^2 + 2x + 2 = 0$  are imaginary.  
**Reason :** If discriminant  $D = b^2 - 4ac < 0$  then the roots of quadratic equation  $ax^2 + bx + c = 0$  are imaginary.
- (a) Both assertion (A) and reason (R) are true and reason (R) is the correct explanation of assertion (A).  
 (b) Both assertion (A) and reason (R) are true but reason (R) is not the correct explanation of assertion (A).  
 (c) Assertion (A) is true but reason (R) is false.  
 (d) Assertion (A) is false but reason (R) is true.
20. **Assertion :**  $PA$  and  $PB$  are two tangents to a circle with centre  $O$ . Such that  $\angle AOB = 110^\circ$ , then  $\angle APB = 90^\circ$ .  
**Reason :** The length of two tangents drawn from an external point are equal.
- (a) Both assertion (A) and reason (R) are true and reason (R) is the correct explanation of assertion (A).  
 (b) Both assertion (A) and reason (R) are true but reason (R) is not the correct explanation of assertion (A).  
 (c) Assertion (A) is true but reason (R) is false.  
 (d) Assertion (A) is false but reason (R) is true.

## Section - B

Section B consists of 5 questions of 2 marks each.

21. If  $S_n$  the sum of first  $n$  terms of an AP is given by  $S_n = 3n^2 - 4n$ , find the  $n^{\text{th}}$  term.
22. In Figure a quadrilateral  $ABCD$  is drawn to circumscribe a circle, with centre  $O$ , in such a way that the sides  $AB$ ,  $BC$ ,  $CD$ , and  $DA$  touch the circle at the points  $P, Q, R$  and  $S$  respectively. Prove that.  $AB + CD = BC + DA$ .



23. Prove that the point  $(3,0)$ ,  $(6,4)$  and  $(-1,3)$  are the vertices of a right angled isosceles triangle.
24. Check whether  $4^n$  can end with the digit 0 for any natural number  $n$ .
25. The  $8^{\text{th}}$  term of an AP is zero. Prove that its  $38^{\text{th}}$  term is triple of its  $18^{\text{th}}$  term.

**OR**

If the number  $x + 3$ ,  $2x + 1$  and  $x - 7$  are in AP find the value of  $x$ .

## Section - C

**Section C consists of 6 questions of 3 marks each.**

26. Determine the values of  $m$  and  $n$  so that the following system of linear equation have infinite number of solutions :

$$(2m - 1)x + 3y - 5 = 0$$

$$3x + (n - 1)y - 2 = 0$$

27. Solve for  $x$  :

$$\frac{2x}{x-3} + \frac{1}{2x+3} + \frac{3x+9}{(x-3)(2x+3)} = 0, x \neq 3, -\frac{3}{2}$$

28. If a circle touches the side  $BC$  of a triangle  $ABC$  at  $P$  and extended sides  $AB$  and  $AC$  at  $Q$  and  $R$ , respectively, prove that  $AQ = \frac{1}{2}(BC + CA + AB)$

**OR**

In  $\Delta ABD$ ,  $AB = AC$ . If the interior circle of  $\Delta ABC$  touches the sides  $AB$ ,  $BC$  and  $CA$  at  $D$ ,  $E$  and  $F$  respectively. Prove that  $E$  bisects  $BC$ .

29. An aeroplane, when flying at a height of 4000 m from the ground passes vertically above another aeroplane at an instant when the angles of elevation of the two planes from the same point on the ground are  $60^\circ$  and  $45^\circ$  respectively. Find the vertical distance between the aeroplanes at that instant. (Use  $\sqrt{3} = 1.73$ )
30. A hemispherical bowl of internal diameter 36 cm contains liquid is filled into 72 cylindrical bottles of diameter 6 cm. Find the height of the each bottle, if 10% liquid is wasted in this transfer.

**OR**

A hollow cylindrical pipe is made up of copper. It is 21 dm long. The outer and inner diameters of the pipe are 10 cm and 6 cm respectively. Find the volume of copper used in making the pipe.

31. A child has a die whose six faces show the letters as shown below:

$\boxed{A}$   $\boxed{A}$   $\boxed{B}$   $\boxed{C}$   $\boxed{C}$   $\boxed{C}$

The die is thrown once. What is the probability of getting (i)  $A$ , (ii)  $C$ ?

## Section - D

**Section D consists of 4 questions of 5 marks each.**

32. If  $\beta$  and  $\frac{1}{\beta}$  are zeroes of the polynomial  $(a^2 + a)x^2 + 61x + 6a$ . Find the value of  $\beta$  and  $\alpha$ .

**OR**

Find the zeroes of the quadratic polynomial  $7y^2 - \frac{11}{3}y - \frac{2}{3}$  and verify the relationship between the zeroes and the coefficients.

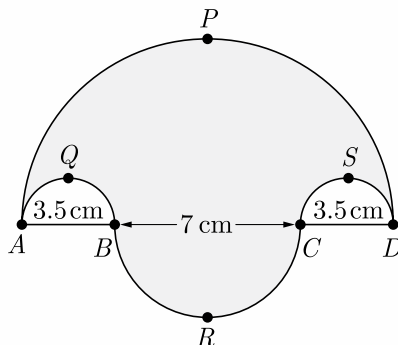
33. In  $\Delta ABC$ ,  $AD$  is the median to  $BC$  and in  $\Delta PQR$ ,  $PM$  is the median to  $QR$ . If  $\frac{AB}{PQ} = \frac{BC}{QR} = \frac{AD}{PM}$ . Prove that  $\Delta ABC \sim \Delta PQR$ .

34. Prove that:  $\frac{\sin \theta}{\cot \theta + \operatorname{cosec} \theta} = 2 + \frac{\sin \theta}{\cot \theta - \operatorname{cosec} \theta}$

OR

If  $\sqrt{3} \cot^2 \theta - 4 \cot \theta + \sqrt{3} = 0$ , then find the value of  $\cot^2 \theta + \tan^2 \theta$ .

35. Find the area of the shaded region in Figure,  $\widehat{APD}$ ,  $\widehat{AQB}$ ,  $\widehat{BRC}$  and  $\widehat{CSD}$ , are semi-circles of diameter 14 cm, 3.5 cm, 7 cm and 3.5 cm respectively. Use  $\pi = \frac{22}{7}$ .



## Section - E

Case study based questions are compulsory.

36. **Mutual Fund :** A mutual fund is a type of financial vehicle made up of a pool of money collected from many investors to invest in securities like stocks, bonds, money market instruments, and other assets. Mutual funds are operated by professional money managers, who allocate the fund’s assets and attempt to produce capital gains or income for the fund’s investors.



Net asset value (NAV) represents a fund’s per share market value. It is the price at which investors buy (“bid price”) fund shares from a fund company and sell them (“redemption price”) to a fund company. The following table below shows the net asset value (NAV) per unit of mutual funds of ICICI mutual funds.



NAV (Rs)	No. of mutual funds
0-5	13
6-10	16
11-15	22
16-20	18
21-25	11

Based on the above information, answer the following questions.

- (i) What is the lower limit of model class of NAV?
- (ii) What is the mode NAV of mutual funds ?
- (iii) What is the mean NAV of mutual funds ?

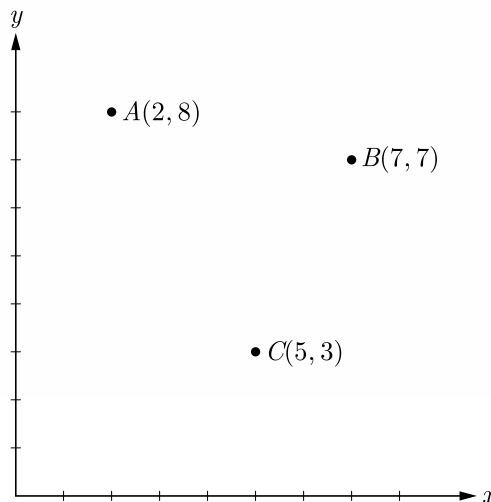
**OR**

- (iv) What is the median NAV of mutual funds ?

**37.** Carpooling : It is the sharing of car journeys so that more than one person travels in a car, and prevents the need for others to have to drive to a location themselves. By having more people using one vehicle, carpooling reduces each person’s travel costs such as: fuel costs, tolls, and the stress of driving. Carpooling is also a more environmentally friendly and sustainable way to travel as sharing journeys reduces air pollution, carbon emissions, traffic congestion on the roads, and the need for parking spaces.

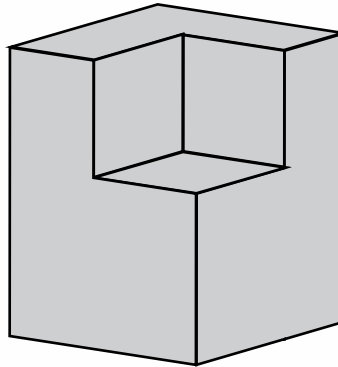


Three friends Amar, Bandhu and Chakradev lives in societies represented by the points  $A$ ,  $B$  and  $C$  respectively. They all work in offices located in a same building represented by the point  $O$ . Since they all go to same building everyday, they decided to do carpooling to save money on petrol. Based on the above information, answer the following questions.



- (i) Which society is nearest to the office?
- (ii) What is the distance between  $A$  and  $C$ ?
- (iii) Find the least distance between  $AB$ ,  $OA$  and  $BC$  ?
- (iv) If Bandhu and Chakradev planned to meet at a club situated at the mid-point of the line joining the points  $B$  and  $C$ , find the coordinates of this point.

**38.** Volume of Solid : A cuboidal solid of base  $x$  by  $x+1$  is shown in figure. Height of original solid is  $x+2$ . A small cuboidal solid of base  $x-2$  by  $x-2$  and height 2 is cut from this solid as shown in figure.



- (i) Find the polynomial for the volume of remaining solid.
- (ii) Use the remainder theorem to determine the volume of remaining solid at  $x = 8$  inch.
- (iii) Use the polynomial to determine the volume at  $x = 8$  inch and verify the result in (ii).

**OR**

Use the remainder theorem to determine the volume at  $x = 10$  inch.

## Class X 2023-24

### Science (086)

Time: 3 Hours

Max. Marks: 80

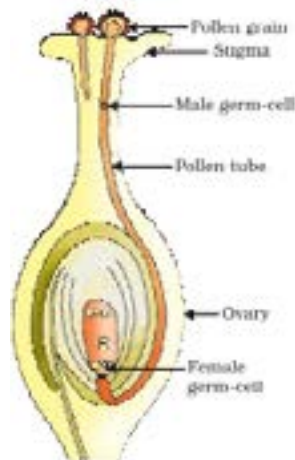
#### General Instructions:

1. This question paper consists of 39 questions in 5 sections.
  2. All questions are compulsory. However, an internal choice is provided in some questions. A student is expected to attempt only one of these questions.
  3. Section A consists of 20 Objective Type questions carrying 1 mark each.
  4. Section B consists of 6 Very Short questions carrying 02 marks each. Answers to these questions should be in the range of 30 to 50 words.
  5. Section C consists of 7 Short Answer type questions carrying 03 marks each. Answers to these questions should be in the range of 50 to 80 words.
  6. Section D consists of 3 Long Answer type questions carrying 05 marks each. Answer to these questions should be in the range of 80 to 120 words.
  7. Section E consists of 3 source-based/case-based units of assessment of 04 marks each with sub-parts.
- 

## SECTION-A

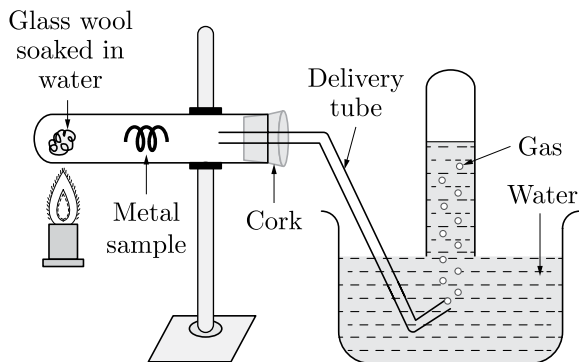
Select and write one most appropriate option out of the four options given for each of the questions 1 – 20.

1. Length of pollen tube depends on the distance between

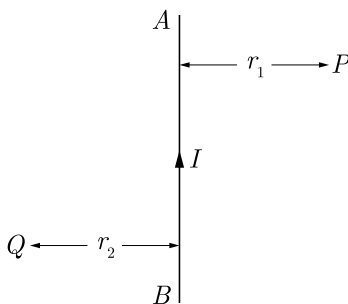


- (a) pollen grain and upper surface of stigma
- (b) pollen grain on upper surface of stigma and ovule
- (c) pollen grain in anther and upper surface of stigma
- (d) upper surface of stigma and lower part of style

2. In the following practical set which of the following gas is emitted?



- (a) Hydrogen
  - (b) Carbon monoxide
  - (c) Carbon dioxide
  - (d) Nitrogen
3. Metal reacts with water and produce a metal oxide and hydrogen gas. Metal oxides that are soluble in water dissolve in it to further form metal hydroxide. But all metals do not react with water. Which of the following statement is correct regarding to physical changes?
- (a) In physical change, new substance is formed.
  - (b) In physical change, no new substance is formed.
  - (c) In physical change, chemical composition of substance is changed.
  - (d) None of these
4. To protect tooth decay we are advised to brush our teeth regularly. The nature of the toothpaste commonly used is
- (a) acidic
  - (b) neutral
  - (c) basic
  - (d) corrosive
5.  $AB$  is a current carrying conductor in the plane of the paper as shown in figure. The directions of magnetic fields produced by it at points  $P$  and  $Q$  (Given  $r_1 > r_2$ , where will the strength of the magnetic field be larger)

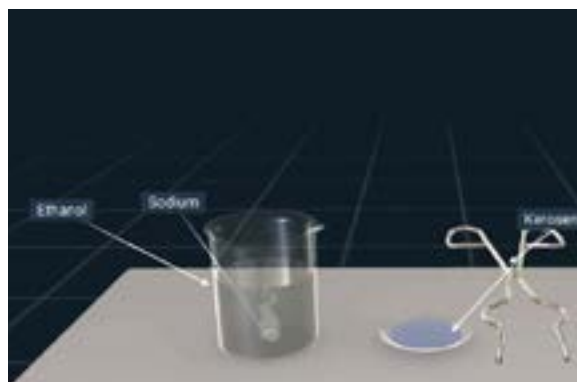


- (a) Inwards, Outwards
- (b) Outwards, Inwards
- (c) Inwards, Inwards,
- (d) Outwards, Outwards

6. Tricuspid valve is present in ?  
 (a) Right atrium and right ventricle  
 (b) Left atria and left ventricle  
 (c) Wall of atrium  
 (d) Wall of ventricle
7. Which one reaction shows the property of double displacement reaction?  
 (a)  $\text{CuSO}_4 + \text{Zn} \longrightarrow \text{ZnSO}_4 + \text{Cu}$   
 (b)  $\text{Cu} + 2\text{AgNO}_3 \longrightarrow \text{Cu}(\text{NO}_3)_2 + 2\text{Ag}$   
 (c)  $\text{NaOH} + \text{HCl} \longrightarrow \text{NaCl} + \text{H}_2\text{O}$   
 (d) None of these
8. Match the chemical substances given in column (A) with their appropriate application given in column (B)

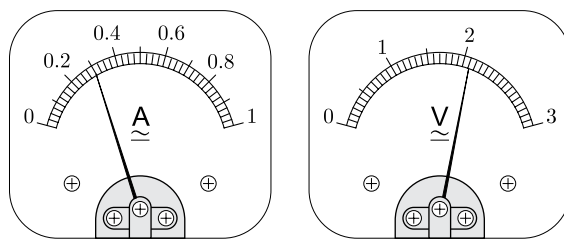
	Column (A)		Column (B)
A.	Bleaching powder	(i)	Preparation of glass
B.	Baking soda	(ii)	Production of $\text{H}_2$ and $\text{Cl}_2$
C.	Washing soda	(iii)	Decolorization
D.	Sodium chloride	(iv)	Antacid

- (a) A- (ii), B- (i), C- (iv), D- (iii)  
 (b) A- (iii), B- (ii), C- (iv), D- (i)  
 (c) A- (iii), B- (iv), C- (i), D- (ii)  
 (d) A- (ii), B- (iv), C- (i), D- (iii)
9. Massive amounts of gaseous exchange takes place in the leaves through stomata for the purpose of  
 (a) Photosynthesis  
 (b) Carrying carbon dioxide  
 (c) Reduction of carbon dioxide  
 (d) Generation of carbohydrates
10. Ethanol reacts with sodium and forms two products. These are

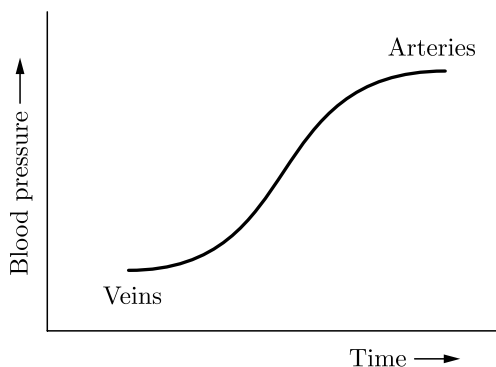


- (a) sodium ethanoate and hydrogen  
 (b) sodium ethanoate and oxygen  
 (c) sodium ethoxide and hydrogen  
 (d) sodium ethoxide and oxygen

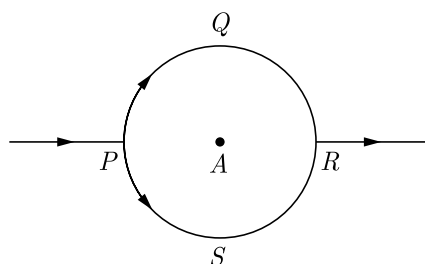
11. The current flowing through a resistor connected in an electrical circuit and the potential difference developed across its ends are shown in the given ammeter and voltmeter. The voltage and the current across the given resistor are respectively:



- (a) 2.1 V, 0.3 A
  - (b) 3.1 V, 1.3 A
  - (c) 1.1 V, 0.6 A
  - (d) 0.1 V, 0.2 A
12. Which of the following statements are true about the brain ?
- (i) The main thinking part of brain is hind brain.
  - (ii) Centres of hearing, smell, memory, sight etc. are located in fore brain.
  - (iii) Involuntary actions like salivation, vomiting, blood pressure are controlled by the medulla in the hind brain.
  - (iv) Cerebellum does not control posture and balance of the body
- (a) (i) and (ii)
  - (b) (i), (ii) and (iii)
  - (c) (ii) and (iii)
  - (d) (iii) and (iv)
13. Which of the following are combination reaction?
1.  $2\text{KClO}_3 \xrightarrow{\text{Heat}} 2\text{KCl} + 3\text{O}_2$
  2.  $\text{MgO} + \text{H}_2\text{O} \longrightarrow \text{Mg}(\text{OH})_2$
  3.  $4\text{Al} + 3\text{O}_2 \longrightarrow 2\text{Al}_2\text{O}_3$
  4.  $\text{Zn} + \text{FeSO}_4 \longrightarrow \text{ZnSO}_4 + \text{Fe}$
- (a) 1 and 3
  - (b) 3 and 4
  - (c) 2 and 4
  - (d) 2 and 3
14. Which blood vessels have high blood pressure and what they have to withstand this high pressure?



- (a) Both arteries and veins have same pressure of blood and they are thick walled vessels.  
 (b) Arteries have high blood pressure and they have elastic and thick walls to withstand this high pressure.  
 (c) Veins have high blood pressure and they have to valves to withstand this high pressure.  
 (d) None of the above.
15. The pattern of the magnetic field produced by the straight current carrying conducting wire is  
 (a) in the direction opposite to the current  
 (b) in the direction parallel to the wire  
 (c) circular around the wire  
 (d) in the same direction of current
16. In the given circuit,  $PQR$  and  $PSR$  are semicircles. What will be the magnetic field at the center  $A$  of the circular loop ?



- (a) Zero  
 (b)  $2\pi r\mu_0$   
 (c) 1  
 (d)  $\mu_0 \frac{B}{2\pi r}$

Question no. 17 to 20 are Assertion-Reasoning based questions.

17. **Assertion :** During digestion, carbohydrates are broken down to form glucose.  
**Reason :** Glucose is necessary for breathing.  
 (a) Both Assertion and Reason are True and Reason is the correct explanation of the Assertion.  
 (b) Both Assertion and Reason are True but Reason is not the Correct explanation of the Assertion.  
 (c) Assertion is True but the Reason is False.  
 (d) Both Assertion and Reason are False.
18. **Assertion :** In humans, males play an important role in determining the sex of the child.  
**Reason :** Males have two X chromosomes.  
 (a) Both assertion (A) and reason (R) are true and reason (R) is the correct explanation of assertion (A).  
 (b) Both assertion (A) and reason (R) are true but reason (R) is not the correct explanation of assertion (A).  
 (c) Assertion (A) is true but reason (R) is false.  
 (d) Assertion (A) is false but reason (R) is true.
19. **Assertion :** Failure of the kidneys leads to death of the person and there is no way he can survive.  
**Reason :** Transplant of kidneys in humans is not possible.  
 (a) Both Assertion and Reason are true and Reason is the correct explanation of Assertion.  
 (b) Both Assertion and Reason are true but Reason is not the correct explanation of Assertion.  
 (c) Assertion is true but Reason is false.  
 (d) Both Assertion and Reason are false.

**20. Assertion :** There is no change in the energy of a charged particle moving in a magnetic field although a magnetic force is acting on it.

**Reason :** Work done by centripetal force is always zero.

- (a) Both assertion (A) and reason (R) are true and reason (R) is the correct explanation of assertion (A).
- (b) Both assertion (A) and reason (R) are true but reason (R) is not the correct explanation of assertion (A).
- (c) Assertion (A) is true but reason (R) is false.
- (d) Assertion (A) is false but reason (R) is true.

## SECTION-B

**Question no. 21 to 26 are very short answer questions.**

**21.** Give reasons for the following :

- (a) Sodium chloride has a high melting point.
- (b) Non-metals do not displace hydrogen from dilute acids.

**or**

A substance  $X$ , which is an oxide of a metal is used intensively in the cement industry. This element is present in bones also. On treatment with water it forms a solution which turns red litmus blue. Identify  $X$  and also write the chemical reactions involved.

**22.** What is parasitism ? Give two examples of parasites one from animals and one from plants.

**23.** What is phloem ? Name its two main components (elements) which help in the conduction of food.

**24.** Name the parts of a nephron in their proper sequence starting from the point of entry of blood into it upto the point of pouring out of the urine from the nephron.

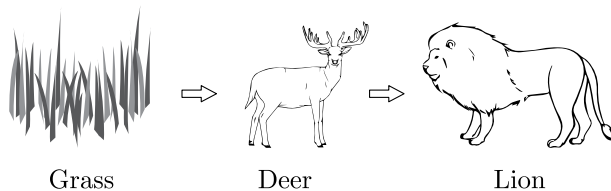
**25.** Why does it take some time to see the objects in a dim-lit room when we enter the room from bright sunlight outside ?

**or**

Give reason :

- (a) Danger signals are red.
- (b) We cannot see an object clearly if it is placed very close to the eyes.

**26.** Consider the food chain :



What will happen if lions are removed from the above food chain ?



## SECTION-C

Question no. 27 to 33 are short answer questions.

27. Give chemical explanation for evolution and absorption of heat in a chemical reaction.
28. (a) Why metals are not found in their free state generally ?  
 (b) If a strip of aluminium with scratched clean surface is dipped into an aqueous solution of copper sulphate for little time, the surface of the strip becomes brownish. What is the reason for this ? Write the balanced chemical equation for the reaction.
29. Define pollination. Explain the different types of pollination.' List two agents of pollination? How does suitable pollination lead to fertilization?

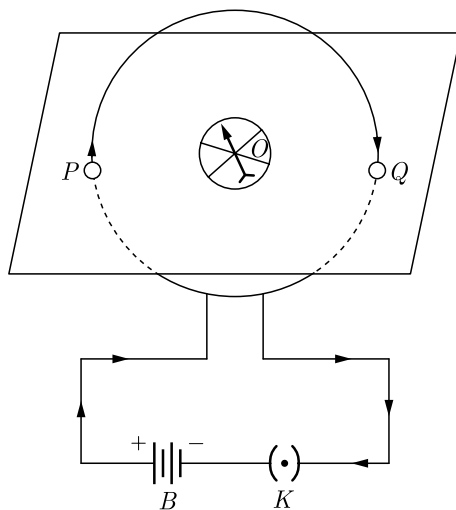
or

A student wants to germinate dicot seeds. Write the four steps in correct sequence that will help him to perform the experiment in the right way.

30. (a) State laws of refraction.  
 (b) A ray of light is incident normally to the surface of a glass slab placed in air. Find the angle of incidence and angle of refraction in this case.
31. A 3 cm tall object is placed 18 cm in front of a concave mirror of focal length 12 cm. At what distance from the mirror should a screen be placed to see a sharp image of the object on the screen. Also calculate the height of the image formed.
32. Demonstrate that due to motion of a magnet near a solenoid coil an induced current is set up in the coil.

or

The flow of current in a circular loop of wire creates a magnetic field at its center. How may existence of this field be detected ? State the rule which helps to predict the direction of this magnetic field.

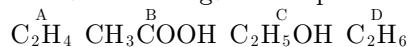


33. Give reason to justify the following :
- (i) The existence of decomposer is essential in a biosphere.  
 (ii) Flow of energy in a food chain is unidirectional.

## SECTION-D

Question no. 34 to 36 are Long answer questions.

34. The formula of four organic compounds are given below:



- (i) Which one of these compounds *A*, *B*, *C* or *D* is a saturated hydrocarbon?
- (ii) Identify the organic acid and give its structural formula.
- (iii) Which of the above compounds when heated at 443K in the presence of concentrated  $\text{H}_2\text{SO}_4$  forms ethene as the major product? What is the role played by concentrated  $\text{H}_2\text{SO}_4$  in this reaction? Also write the chemical equation involved.
- (iv) Give a chemical equation when *B* and *C* react with each other in presence of concentrated  $\text{H}_2\text{SO}_4$ . Name the major product formed and mention one of its important use.

or

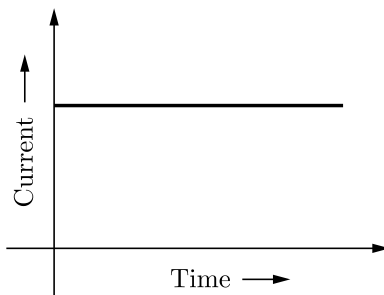
- (a) Carry out the following conversions giving complete conditions for the reaction to take place in each case :
  - (i) Ethanoic acid from Ethanol
  - (ii) Ethane from Ethene
  - (iii) Ester from Ethanoic acid and ethanol
 Also state the names given to all the above conversions.
- (b) Detergents are preferred over soaps. Why? (Give one reason)

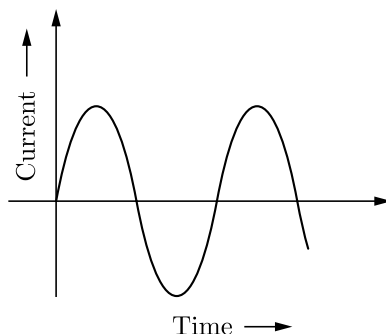
35. (a) Which device prevents implantation by irritating the lining of uterus?
- (b) What could be the possible reason for declining female : male sex ratio in our country? Suggest two measures to achieve 1:1 ratio.
- (c) Name those parts of a flower which serve the same function as the following do in animals :
  - (i) Testis
  - (ii) Ovary
  - (iii) Eggs
  - (iv) Sperms

or

- (a) With the help of diagram show asexual reproduction in Rhizopus.
- (b) How is this method advantageous for Rhizopus?
- (c) How is mode of reproduction in unicellular organisms differ from multicellular organisms?

36. In our daily life we use two types of electric current whose current time graphs are given below :





- Name the type of current in two cases.
- Identify any one source for each type of current.
- What is the frequency of current in case (b) in our country ?
- On the basis of these graphs list two differences between the two currents.
- Out of the two which one is used in transmitting electric power over long distances and why ?

## SECTION-E

**Question no. 37 to 39 are case-based/data-based questions with 2 to 3 short sub-parts. Internal choice is provided in one of these sub-parts.**

37. Electronic configuration of some of the elements are given :

Type of element	Element	Atomic number	Number of electrons in shell
Metals	Sodium (Na)	11	2 8 1
	Magnesium (Mg)	12	2 8 2
	Aluminium (Al)	13	2 8 3
Non-metals	Oxygen (O)	8	2 6
	Sulphur (S)	16	2 8 6
	Chlorine (Cl)	17	2 8 7

- State one physical property to distinguish between metals and non-metals.
- What is the nature of the bond formed when magnesium reacts with chlorine? Write the formula of the compound.

**or**

- What is common between oxygen and sulphur? Draw the electron dot structure of  $O_2$  molecule.

38. Plant hormones affect gene expression and transcription levels, cellular division and growth. They are naturally produced within plants, but very similar chemicals are produced by fungi and bacteria that can also affect plant growth. A large number of related chemical compounds are synthesized by humans. They are used to regulate the growth of cultivated plants, weeds and in vitro-grown plants and plant cells; these man-made compounds are called plant growth regulators or PGRs for short. Plant hormones are not nutrients, but chemicals that in small amounts promote and influence the growth, development and differentiation of cells and tissues. The biosynthesis of plant hormones within plant tissues is often diffused and not always localized. Plants lack glands to produce and store hormones, because, unlike animals which have two circulatory systems (lymphatic and cardiovascular) powered by a heart that moves fluids around the body. Plants use more passive means to move chemicals around their bodies. Plants utilize simple chemicals as hormones, which move more easily through their tissues. They are often produced and used on a local basis within the plant body. Plant cells produce hormones that affect different regions of the cell producing the hormone.

Different hormones can be sorted into different classes, depending on their chemical structures. Within each class of hormone the exact structures vary, but they have similar physiological effects. Initial research into plant hormones identified five major classes : abscisic acid, auxin, cytokinins, ethylene and gibberellins. This list was later expanded and brassinosteroids, jasmonates, salicylic acid and strigolactones are now considered as major plant hormones.

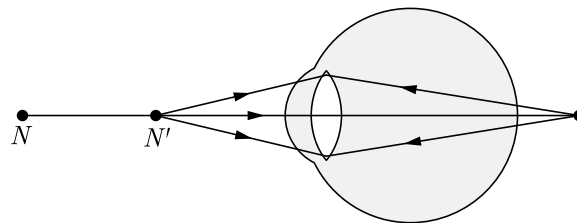


- (i) What are the factors affected by the plant hormones ?
- (ii) What does PGR stands for ?
- (iii) Which class does plant hormones fall into ?

**or**

- (iv) What were the five major plant hormones discovered in the initial research ?

**39.** A person is suffering from hypermetropia (long sightedness). It is a defect in which a human eye can see far off object clearly, but is unable to see nearby object distinctly. The near point of the person is 1.5 m. Assume that the near point of the normal eye is 25 cm.



- (i) What type of lens should be used in his spectacles?
- (ii) What should be the focal length of the lens he used ?
- (iii) What will be the power of the lens ?

**or**

- (iv) Write one possible cause of this defect.

## Social Science (Code 087)

### Class X Session 2023-24

**Time: 3 Hours**

**Max. Marks: 80**

#### General Instructions:

- i. Question paper comprises five Sections – A, B, C, D and E. There are 37 questions in the question paper. All questions are compulsory.
  - ii. Section A – From question 1 to 20 are MCQs of 1 mark each.
  - iii. Section B – Question no. 21 to 24 are Very Short Answer Type Questions, carrying 2 marks each. Answer to each question should not exceed 40 words.
  - iv. Section C contains Q.25 to Q.29 are Short Answer Type Questions, carrying 3 marks each. Answer to each question should not exceed 60 words
  - v. Section D – Question no. 30 to 33 are long answer type questions, carrying 5 marks each. Answer to each question should not exceed 120 words.
  - vi. Section-E - Questions no from 34 to 36 are case based questions with three sub questions and are of 4 marks each.
  - vii. Section F – Question no. 37 is map based, carrying 5 marks with two parts, 37a from History (2 marks) and 37b from Geography (3 marks).
  - viii. There is no overall choice in the question paper. However, an internal choice has been provided in few questions. Only one of the choices in such questions have to be attempted.
  - ix. In addition to this, separate instructions are given with each section and question, wherever necessary.
- 

## SECTION-A

**Multiple Choice Questions (Q 1 to 20)**

**2X4=8**

1. Identify the appropriate reason for the formation of the Swaraj Party from the options given below :
  - (a) Wanted members of Congress to return to Council Politics.
  - (b) Wanted members of Congress to ask for Purna Swaraj for Indians.
  - (c) Wanted members of Congress to ask Dominion State for India.
  - (d) Wanted members of Congress to oppose Simon Commission.
  
2. Arrange the following happenings in the correct order-
  1. Mahatma Gandhi launched the civil disobedience movement.
  2. First world war.
  3. Second world war.
  4. Establishment of G-77.
  - (a) 2, 1, 3, 4
  - (b) 3, 2, 4, 1
  - (c) 4, 3, 1, 2
  - (d) 2, 1, 4, 3

3. In which of the two languages, 50 books were published in 1674?  
 (a) Konkani and Kanada (b) Malayalam and Manipuri  
 (c) Telugu and Tamil (d) Oriya and Bhojpuri
4. Which one of the following was NOT the reason for the popularity of scientific ideas among the common people in eighteenth century Europe ?  
 (a) Printing of idea of Isaac Newton  
 (b) Development of printing press  
 (c) Interest of people in science and reason  
 (d) Traditional aristocratic groups supported it.
5. **Assertion :** Iron ore is the basic mineral and the backbone of India.  
**Reason :** India is rich in good quality Iron ore.  
 (a) Both assertion and reason are true and reason is the correct explanation of assertion.  
 (b) Both assertion and reason are true but reason is not the correct explanation of assertion.  
 (c) Assertion is true but reason is false.  
 (d) Both assertion and reason are false.

6. Which of the following are perfectly matched :

	<b>List I</b>	<b>List II</b>
(a)	First World War	1908
(b)	Second World War	1945
(c)	Casualties of first World War	100 million
(d)	Casualties of Second World War	60 million

7. Statement I : In a democracy, everyone has voice in the shaping of public policies.  
 Statement II : India has federal system.  
 (a) Statement I is correct and statement II is incorrect.  
 (b) Statement I is incorrect and statement II is correct.  
 (c) Both statement are incorrect  
 (d) Both statement are correct
8. Identify the kind of legislative power distribution list by the Constitution of India :  
 • It includes the subject of national interest.  
 • Provides uniformity throughout the country.  
 • The Union govt alone has the power to make laws related to the subjects of this list.  
 • Banking, Defence and Communication are some of the subjects under this list.  
 Select the appropriate option from the following.  
 (a) State List (b) Union List  
 (c) Residuary List (d) All of these

9. Which of the following can be considered a form of sharing of powers between the governments?

- Statement I Division of powers between the Chief Minister and Governor.
- Statement II Division of powers between Central and State Legislatures.
- Statement III Power sharing between Union and the States through lists of subjects.
- Statement IV Power division between Bureaucracy and Executive.

Codes

- (a) Only Statement I is right
- (b) Only Statement II is right
- (c) Statement II and IV are right
- (d) Statement II and III are right

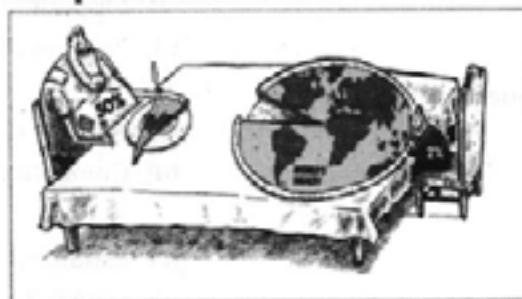
10. Observe the following table of child sex ratio 0-6 years in India between 1981-2011 and answer the question:

S.No.	Year	No. of Girls per 1000 Boys
1.	1981	962
2.	1991	945
3.	2001	927
4.	2021	919

Which reason is responsible for the decline in the child sex ratio in India?

- (a) Nature of patriarchal society.
- (b) Attraction toward son over daughter.
- (c) Even after legalization of ban over sex identification of unborn child, these activities are still prevailing in society.
- (d) All of these

11. Study the picture and answer the question that follows:



Which of the following aspect best signifies above image?

- (a) Economic Distribution
- (b) Dignity and freedom of the citizens
- (c) Accommodation of social diversity
- (d) Economic growth and development

12. Consider the following statements on parties :
- A. Political parties do not enjoy much trust among the people.
  - B. Parties are often rocked by scandals involving top party leaders.
  - C. Parties are not necessary to run governments.

Which of the statements given above are correct ?

- (a) A, B and C
- (b) A and B
- (c) B and C
- (d) A and C

13. Match the following and choose correct option.

Problems faced by farming sector		Some possible measures	
A.	Unirrigated land	1.	Setting up agro-based mills
B.	Low prices for crops	2.	Cooperative marketing societies
C.	Debt burden	3.	Procurement of food grains by government
D.	No job in the off season	4.	Construction of canals by the government
E.	Compelled to sell their grains to the local traders soon after harvest	5.	Banks to provide credit with low interest

Select the correct option :

- (a) A → 2, B → 5, C → 4, D → 3, E → 1
- (b) A → 3, B → 2, C → 4, D → 5, E → 1
- (c) A → 3, B → 5, C → 2, D → 4, E → 1
- (d) A → 4, B → 3, C → 5, D → 1, E → 2

14. Identify the sector:

- It provides various things needed by the society as a whole which the private sector will not provide at a reasonable price.
- The purpose of this sector is not just to earn profits but to social service also.
- It creates employment opportunities through creation and expansion of infrastructure
- It controls private monopolies.

Select the appropriate option from the following.

- (a) Public Sector
- (b) Tertiary sector
- (c) Primary Sector
- (d) Private Sector

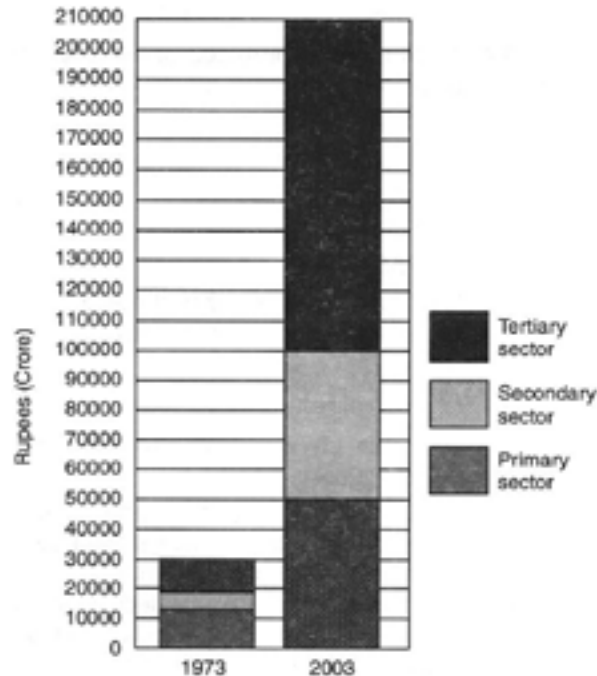
15. Observe the following picture cautiously which depicts about.



- (a) The ancient system of economic activity
- (b) The barter system
- (c) Non-economic based activities
- (d) Both (a) and (b)



16. Most of the agricultural labourers like Mohan depend upon loans from informal sector. Which of the following statements about this sector is correct –
- There are government bodies to supervise informal sector.
  - Money lenders ask for a reasonable rate of interest.
  - Cost of informal loans to the borrower is quite high.
  - Money lenders use fair means to get their money back.
17. Read the source given below and answer the questions that follows:



Which was the largest producing sector in 1973?

- Secondary sector
  - Tertiary sector
  - Agriculture or Primary sector
  - None of these
18. The process of rapid integration or interconnection between countries due to greater foreign investment and foreign trade is known as
- Integration of markets
  - International trade
  - MNC
  - Globalisation
19. Which of the following will be the aspiration of a working woman?
- To have a safe and secure work environment at the office.
  - To have better technologies that can store data easily.
  - To have good job opportunities where her education can be made use of.
  - To have a fully functioning day care facilities in the office premises.

20. Abhishek was giving a speech on one of the eminent personalities of India. During his speech, he mentioned “The great leader joined active politics in 1930” and organised the Depressed Classes Association to uplift the dalits and demanded separate electorates for dalits and reservation of seats in educational institutions for them.

With regard to your knowledge, Abhishek has been referring to.

- (a) Mahatma Gandhi (b) Sardar Vallabhbhai Patel  
(c) Dr BR Ambedkar (d) Muhammad Ali Jinnah

## SECTION-B

Very Short Answer Question (Q 21 to 24)

2X4=8

21. Study the map thoroughly. Mention any one reason why this highlighted region is famous with respect to nationalism in India.



22. Mohan owns a farm in Uttar Pradesh. He wishes to cultivate either Jute or Sugarcane. Which crop out of these two should he cultivate keeping in mind the conditions required for their growth? Explain.

or

Describe any three main features of ‘Kharif crop season.’

23. State any three functions of the Election Commission of India.
24. ‘Barriers on foreign trade and foreign investment were removed to a large extent in India since 1991.’ Justify the statement.

## SECTION-C

Short Answer Based Question (Q 25 to 29)

3X5=15

25. Mention any three shortcomings of the Indian Act of 1919.

OR

Which were the two types of demands mentioned by Gandhi ji in his letter to viceroy Irwin on 31 January 1930. Why was abolitions of salt tax most stirring demand? Explain.

26. What problems are being faced by the people of Rajasthan due to shortage of water ? Mention those problems very briefly.

27. “Our society is still a male dominated society.” Explain the statement with the help of examples.

28. Describe the importance of formal sources of credit in the economic development.

29. Study the data given below and answer the following questions.

Country	Gross National Income (GNI) (per capital (2011 PPPS)	Life Expectancy at Birth (2017)	Mean years of Schooling of People aged 25 + years and above (2017)	HDI Rank in the world (2018)
Sri Lanka	11,326	75.5	10.9	76
India	6,353	68.8	6.4	130
Myanmar	5,567	66.7	4.9	148
Pakistan	5,331	66.6	5.2	150
Nepal	2,471	70.6	4.9	149
Bangladesh	3,677	72.8	5.8	136

(i) Identify the country that most probably has a well-developed healthcare system but lesser average education than India.

(ii) What does the terms life expectancy and mean years of schooling indicate with respect to human development?

## SECTION-D

Long Answer Based Question (Q 30 to 33)

5X4=20

30. How did a wave of economic nationalism strengthen the wider nationalist sentiment growing in Europe ? Explain.

OR

“The idealistic liberal-democratic sentiment of nationalism in the first half of the 19th century became a narrow creed with limited ends.” Examine the statement.

31. What do you mean by 'land use pattern' ? Name the factors that determine the use of land.

OR

What is meant by 'Land degradation'. Which are the factors responsible for land degradation ?

OR

Explain any four human activities which are mainly responsible for land degradation in India.

32. What were the reasons for the alienation of Sri Lankan Tamils ? What was the effect of this on the country ?

OR

Explain any four forms of power sharing in government.

OR

Explain any three forms of power sharing in modern democracies.

33. Why people should be healthy and ornamented with education ?

OR

Describe various efforts made by the Government of India in the field of health.

OR

What efforts have been made by the government to provide health services after independence ?

## SECTION-E

Case Based Question (Q 34 to 36)

4X3=12

34. Read the sources given below and answer the questions that follows:

*Large-scale development projects have also contributed significantly to the loss of forests. Since 1951, over 5,000 sq. km of forest was cleared for river valley projects. Clearing of forests is still continuing with projects like the Narmada Sagar Project in Madhya Pradesh, which would inundate 40,000 hectares of forest. Mining is another important factor behind deforestation. The Buxa Tiger Reserve in West Bengal is seriously threatened by the ongoing dolomite mining. It has disturbed the natural habitat of many species and blocked the migration route of several others, including the great Indian elephant.*

*The Himalayan Yew (Taxus wallachiana) is a medicinal plant found in various parts of Himachal Pradesh and Arunachal Pradesh. A chemical compound called 'taxol' is extracted from the bark, needles, twigs and roots of this tree, and it has been successfully used to treat some cancers – the drug is now the biggest selling anti-cancer drug in the world. The species is under great threat due to over-exploitation. In the last one decade, thousands of yew trees have dried up in various parts of Himachal Pradesh and Arunachal Pradesh.*

*"Project Tiger", one of the well-publicised wildlife campaigns in the world, was launched in 1973. Tiger conservation has been viewed not only as an effort to save an endangered species, but with equal importance as a means of preserving biotypes of sizeable magnitude. Corbett National Park in Uttarakhand, Sunderbans National Park in West Bengal, Bandhavgarh National Park in Madhya*

*Pradesh, Sariska Wildlife Sanctuary in Rajasthan, Manas Tiger Reserve in Assam and Periyar Tiger Reserve in Kerala are some of the tiger reserves of India.*

**Questions:**

1. Why is the Buxa Tiger Reserve in West Bengal seriously threatened?
2. From which plant that biggest selling anti-cancer drug in the world is made up of ?
3. Why was tiger conservation launched?

**35.** Read the sources given below and answer the questions that follows:

*Union List includes subjects of national importance such as defence of the country, foreign affairs, banking, communications and currency. They are included in this list because we need a uniform policy on these matters throughout the country. The Union Government alone can make laws relating to the subjects mentioned in the Union List.*

*State List contains subjects of State and local importance such as police, trade, commerce, agriculture and irrigation. The State Governments alone can make laws relating to the subjects mentioned in the State List.*

*Concurrent List includes subjects of common interest to both the Union Government as well as the State Governments, such as education, forest, trade unions, marriage, adoption and succession. Both the Union as well as the State Governments can make laws on the subjects mentioned in this list. If their laws conflict with each other, the law made by the Union Government will prevail.*

**Questions :**

1. How many items are listed in the Union List?
2. Which kind of subjects are listed in the state list?
3. Who makes laws in the concurrent list? It conflict occurs then what happen in the List?

**36.** Study the given sources and answer the questions that follows:

*Over the thirty years between 1973 and 2003, while production in all the three sectors has increased, it has increased the most in the tertiary sector. As a result, in the year 2003, the tertiary sector has emerged as the largest producing sector in India replacing the primary sector.*

*Every state or region has potential for increasing the income and employment for people in that area. It could be tourism, or regional craft industry, or new services like IT. Some of these would require proper planning and support from the government. For example, a study by the Planning Commission says that if tourism as a sector is improved, every year we can give additional employment to more than 35 lakh people.*

*Workers in the organised sector enjoy security of employment. They are expected to work only a fixed number of hours. If they work more, they have to be paid overtime by the employer. They also get several other benefits from the employers. What are these benefits? They get paid leave, payment during holidays, provident fund, gratuity etc. They are supposed to get medical benefits, and, under the laws, the factory manager has to ensure facilities like drinking water and a safe working environment. When they retire, these workers get pensions as well.*

**Question :**

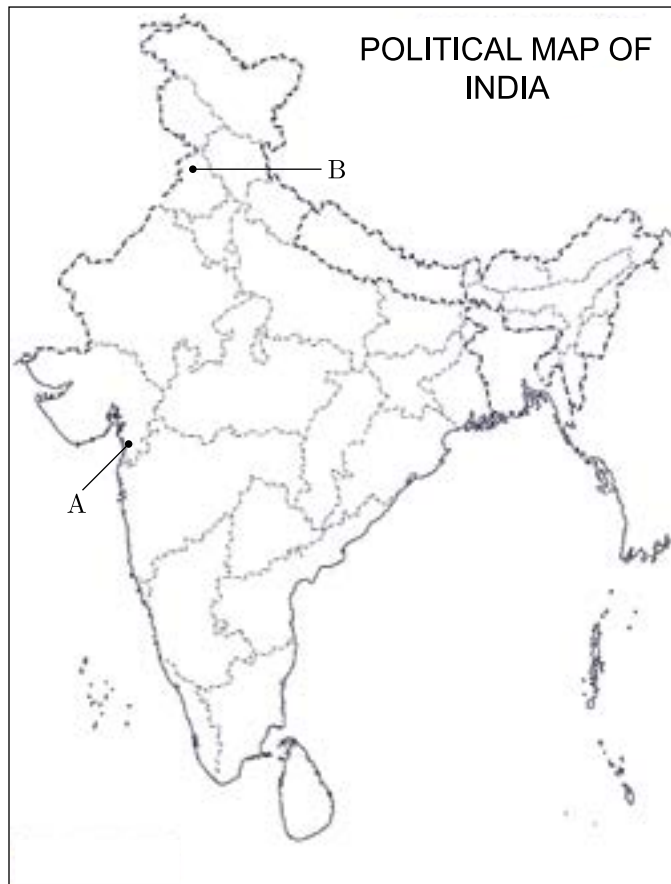
1. Which sector has the highest share in the year 2003?
2. How to create more employment in rural areas?
3. Write any two benefits of organised sector employees.

## SECTION-F

Map Skill Based Question (Q 37a and 37b)

2+3=5

37. (a) Two places (A) and (B) have been marked on the given outline map of India. Identify them and write their correct names on the lines drawn near them.
- (A) The place where Mahatma Gandhi broke the salt law.
  - (B) The place where mass massacre took place in Amritsar on 13 April 1919.
- (b) On the same outline map of India, locate and label any 3 of the following with suitable symbols.
- (i) Haldia - Major sea port
  - (ii) Nuclear Power Plant in UP
  - (iii) Tehri - Dam
  - (iv) Thiruvananthapuram - International Airport



□□□□□□

**SAMPLE PAPER**  
**CLASS X**  
**SUBJECT – COMPUTER APPLICATIONS (165)**

<b>SECTION –A</b>
-------------------

1. Which of the following not a factor of digital divide?
  - a. Digital literacy
  - b. Economic Inequality
  - c. Technology gap
  - d. Software Licensing
2. Website *https://digilocker.gov.in* comes under which of the following category?
  - a. E-Commerce
  - b. E-Reservation
  - c. E-Governance
  - d. E-Banking
3. Which one of the following is not a Search Engine?
  - a. Google
  - b. Bing
  - c. AltaVista
  - d. Firefox
4. What is the full form of SSH Protocol?
  - a. Secure Socket Handshake Protocol
  - b. Socket Secure Shell Protocol
  - c. Shell Socket Secure Protocol
  - d. Secure Shell Protocol
5. The first page of website is called.
  - a. Web Page
  - b. House Page
  - c. Home Page
  - d. Multimedia Page
6. Which of the following is an open-source software?
  - a. Microsoft Edge
  - b. Mozilla Firefox
  - c. Google Chrome
  - d. Safari
7. The HTML tag used to make the text/character appearance as superscript:
  - a. <sub></sub>
  - b. <p></p>
  - c. <s></s>
  - d. <sup></sup>
8. Which HTML tag is used to create heading in a table?
  - a. <td type=heading>
  - b. <t head>
  - c. <Head>
  - d. <th>
9. The commonly used extensions of HTML file is/are.
  - a. htm

- b. html
- c. xml
- d. Both a and b

10. The <EMBED> tag element is used in HTML to attach which type of file?
- a. Image Only
  - b. Video Only
  - c. Audio Only
  - d. Image, Video and Audio

**Questions No-11 & 12 are Assertion and Reason types. Each question consists of two statements, namely, Assertion (A) and Reason (R). Select the most suitable option considering the Assertion & Reason.**

11. Assertion (A): Patents comes under IPR (Intellectual Property Rights).

Reason (R): Patent is exclusive right granted to the user for an invention.

- a. Both Assertion (A) and Reason (R) are true and Reason (R) is a correct explanation of Assertion (A).
- b. Both Assertion (A) and Reason (R) are true but Reason (R) is not a correct explanation of Assertion (A).
- c. Assertion (A) is true and Reason (R) is false.
- d. Assertion (A) is false and Reason (R) is true.

12. Assertion (A): Net-Banking frauds can be classified as cybercrimes.

Reason (R): Net-Banking frauds includes the use of Internet.

- a. Both Assertion (A) and Reason (R) are true and Reason (R) is a correct explanation of Assertion (A).
- b. Both Assertion (A) and Reason (R) are true but Reason (R) is not a correct explanation of Assertion (A).
- c. Assertion (A) is true and Reason (R) is false.
- d. Assertion (A) is false and Reason (R) is true.

<b>SECTION –B</b>
-------------------

13. Define the following terms:

- a. IPR
- b. Open-Source Software

14. (a) Name any two major e-governance projects in India.

**OR**

(b) Write any 2 advantages of e-Banking.

15. Explain the term Remote login? Name the protocol used for Remote Login.

16. (a) Mention HTML Code to display the following formula/equation in a web page.

- i)  $H_2SO_4$
- ii)  $(a+b)^2 = (a^2 + b^2 + 2ab)$

**OR**

(b) What is the use of "ALT" attribute in the <IMG>tag?

17. What is margin and float with respect to CSS?

18. (a) What are heading tags in HTML? Write HTML statement(s) to illustrate the usage of these tags.

**OR**



(b) Jaitik is writing HTML Code for a page as follows: -

```
<html>
<body>
<h7>My First Heading</h7>
<a>My first paragraph</a>
</body>
</html>
```

But he is not getting desired output in this code which should consist "My first Heading" text display as heading and "My first paragraph" text as a paragraph. Help him to identify the error and correct the code. (Underline the error(s) and Re-write the Correct code).

19. Priya, a student of class X, is not aware about use of HTML and CSS. Help her by telling anyone use of HTML and CSS each.

**SECTION –C**

20. Sam, a newly appointed web designer in a Software Company, designs a web page. Help him in getting the following tasks done correctly:

- i) If he wants to change the name of the font(font-type) for certain text, which attribute of the font tag he should use or refer?
- ii) If he needs to insert an image "logo.jpg" into a web-page, suggest the tag which he should use.
- iii) If he needs to link a web page to another web page, suggest the tag which he should use.

21. Consider the URL: *https://www.python.org* and answer the following questions:

- a. Which component identifies the type of protocol?
- b. What is the significance of "s" in https?
- c. What does www stand for?

22. (a) Paridhi, a student of class X, wants to align text in center using CSS but she does not know the syntax for the same, help her to align text to center.

**OR**

(b) What are the three ways of inserting or linking a style sheet?

23. Raju wants to write the HTML Code to generate a web page with the following specifications: -

- a. Title of the page should be "CODING SKILL SUBJECT AS PER NEP 2020"
- b. The background color should be green.
- c. Web page should display content/text as "NEP 2020 Suggests Coding Skill subjects to be implemented from early education" as H1 Heading with style color White.

Help Raju to generate a web page with above specifications.

24. Write the HTML code to design the web page as shown: -

**APPLICATION FORM**

USERNAME :

HOBBIES :

- READING
- TRAVELLING
- PLAYING GAMES
- SINGING AND DANCING

SELECT STREAM:

**OR**

Write HTML code to design the web page containing the table as shown below

(Background colour of table display should be “lime” with cellpadding =20):-

CITY AND THEIR DISTANCE(KM) FROM DELHI		
SNO.	CITY NAME	DISTANCE FROM DELHI
1	MUMBAI	1408 KM
2	CHENNAI	2250 KM

#### Case Study - 1

25. Mr. Jatin is working as a Zonal Manager in ABFD Ltd Bank posted in the Nagpur. He wants to hold an Online Review meeting with branch managers working under his zone,
- a) Which Web Service Mr. Jatin should use to communicate with branch managers in online face to face mode?
  - b. Mr. Jatin also wants to send an email to branch managers requesting them to prepare the balance sheet. Which network protocol is involved during this email communication?
  - c. Mr. Jatin needs to send some high security documents to Branch Managers. He uses an application which supports the \_\_\_\_\_ protocol.
  - d. In order to gather some information on latest accounting trends, Mr. Jatin has to do some research. He can do this by locating sites online using a \_\_\_\_\_.

#### Case Study-2

26. Consider the following scenario and answer the questions which follow:  
"A student Naitik is expected to write a research paper on a particular topic. The student had a friend Jaitik who took a similar class five years ago. The student asks Jaitik for a copy of his paper and submitted the entire paper as his own research work".
- a. Has Naitik done the right thing?
  - b. Which activity does appropriately categorise the act of Naitik?
  - c. What kind of offence is made by the student Naitik? Explain Patent with respect to IPR (Intellectual property rights).
  - d. Suggest two Cyber Ethics that Naitik should be aware of.

CLASS - X  
SUB : SANSKRIT

TIME : 3 hrs.

Maximum Marks : 80

निर्देशाः

- i. अस्मिन् प्रश्नपत्रे चत्वारः खण्डाः सन्ति ।
- ii. प्रत्येकं खण्डम् अधिकृत्य उत्तराणि एकस्मिन् स्थाने क्रमेण लेखनीयानि ।
- iii. प्रश्नसंख्या परश्चपत्रानुसारम् अवश्यमेव लेखनीया ।
- iv. सर्वेषां प्रश्नानाम् उत्तराणि संस्कृतेन लेखनीयानि ।

(अपठित-अवबोधनम्) (10)

1. अनुच्छेदं पठित्वा उत्तराणि लिखत -

आधुनिके औद्योगिके युगे प्रदूषणस्य समस्या दिनं प्रतिदिनं वर्धते एव । कुत्रापि स्वच्छः वायुः न प्राप्यते, न स्वच्छं जलं लभ्यते न च स्वच्छानि खाद्यपदार्थानि प्राप्यन्ते । अद्यत्वे यन्त्रालयानां यानानां च धूमेन सम्पूर्णवायुमण्डलं दूषितं सञ्जातम् । दूषितः वायुः एव श्वासेन हृदये प्रविशति । अतः विविधाः श्वासरोगाः, हृदयरोगाः, चर्मरोगाः, नेत्ररोगाः च जनान् पीडयन्ति । वायुप्रदूषणस्य प्रमुखतमं कारणम् औद्योगिकविकासः अस्ति । वृक्षाणां विनाशं कृत्वा जनाः औद्योगिकक्षेत्राणां विकासं तु कुर्वन्ति किन्तु ते प्रकृतिदेवीमपि सम्पीडयन्ति । विज्ञानस्य प्रगत्या नित्यं नूतनयन्त्राणामपि आविष्कारः भवति । अतः अस्माभिः सर्वैः मिलित्वा प्रदूषणसमस्यायाः समाधानं कर्तव्यम् ।

I. एकपदेन उत्तरत -

1 X 2 = 2

- (i) दूषितः वायुः कथं हृदये प्रविशति ?
- (ii) जनाः केषां विनाशं कृत्वा औद्योगिकक्षेत्राणां विकासं कुर्वन्ति ?

II. पूर्णवाक्येन उत्तरत -

2 X 2 = 4

- (i) वायुप्रदूषणेन के के रोगाः भवन्ति ?
- (ii) जनाः केन प्रकारेण प्रकृतिदेवीं सम्पीडयन्ति ?

III. भाषिककार्यम् -

1 X 3 = 3

- (i) 'दुःखीकुर्वन्ति' अस्य पदस्य अनुच्छेदे कः पर्यायः?  
(a) प्राप्यन्ते (b) प्रविशन्ति (c) सम्पीडयन्ति
- (ii) गद्यांशे 'ते' इति सर्वनामपदं कस्मै प्रयुक्तम् ?  
(a) वृक्षेभ्यः (b) जनेभ्यः (c) क्षेत्रेभ्यः
- (iii) ते प्रकृतिदेवीम् अपि सम्पीडयन्ति--- अत्र किं कर्तृपदम्?  
(a) ते (b) प्रकृतिदेवीम् (c) सम्पीडयन्ति

(IV) अस्य गद्यांशस्य उपयुक्तं शीर्षकं लिखत ।

1 X 1 = 1

खण्डः - ख

रचनात्मकं कार्यम् (15)

2. भवान् राकेशः। भवतः विद्यालयस्य छात्राः शैक्षिक-यात्रायै जोधपुरं गमिष्यन्ति । पितुः आज्ञाप्राप्त्यर्थं लिखिते अस्मिन् पत्रे मञ्जूषा सहायतया रिक्तस्थानि पूरयित्वा पुनः लिखत - 1/2X10=5

संस्कृतिः -----1-----

----

तिथि -----

----

आदरणीयाः -----2----- !

सादरं -----3----- |

भवतां पत्रं प्राप्तं -----4----- च ज्ञाता । मम विद्यालयः शरदावकाशे छात्रान् -----5-

----- जोधपुरं नेष्यति । अहमपि एतत् -----6----- नगरं द्रष्टुम् इच्छामि ।

महां -----7----- पञ्चशतं रुप्यकाणि-----8----- भवन्तः । शेषं कुशलम् । -----

-----9----- मम प्रणामाः अनुजाय च स्नेहः ।

-----10-

----- पुत्रः

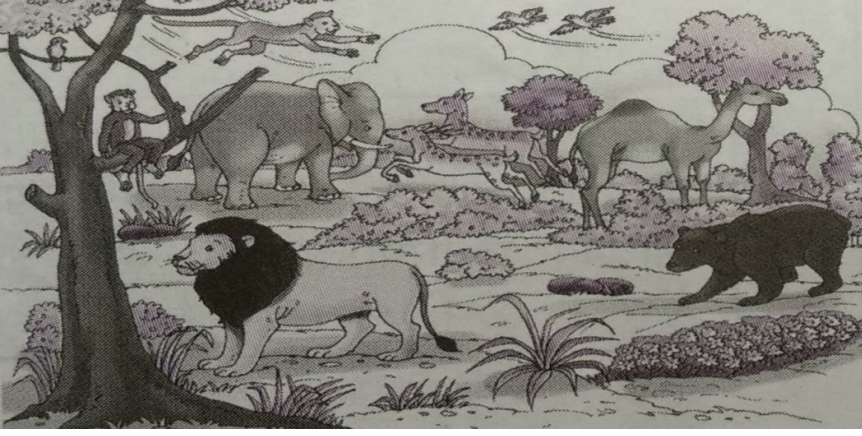
राके

शः

मञ्जूषा - यात्राव्ययार्थं, छात्रावासतः, भवताम्, पितृमहोदयाः, ऐतिहासिकम्, प्रेषयन्तु, नमोनमः, अम्बायै, कुशलता, शैक्षिक-यात्रायै ।

3. अधोप्रदत्तं चित्रं दृष्ट्वा मञ्जूषा-सहायतया संस्कृते पञ्च वाक्यानि लिखत -

1X5=5



मञ्जूषा - वने, धावति, वानराः, वृक्षाः, कूर्दन्ति, पुष्पाणि, गजः भल्लुकः, मृगौ, उष्ट्रः, वृक्षेषु, इतस्ततः।

4. अधोलिखितवाक्यानां संस्कृतभाषायाम् अनुवादं कृत्वा लिखत -

1X5= 5

- (i) भारत ऋषि मुनियों का देश है।
- (ii) साधुसङ्गति मार्गदर्शन करती है।
- (iii) श्रीकृष्ण महापुरुषों में पूजनीय हैं।
- (iv) मेरा भाई दसवीं कक्षा में पढता है।
- (v) ईश्वर सबको सद्बुद्धि दें।

खण्ड: 'ग'

(अनुप्रयुक्त-व्याकरणम्)

5. निम्नलिखितेषु वाक्येषु रेखाङ्कितपदानां सन्धिं विच्छेदं वा कृत्वा लिखत -

1X4=4

- (i) तस्य भार्या पुत्रद्वयोपेता पितुर्गृहं प्रति चलिता।
- (ii) कज्जलमलिनं धूमं मुञ्चति।
- (iii) युष्मद्दर्शनात् कुशलमिव।
- (iv) प्रवासोऽयं दारुणश्च।

6. अधोलिखितेषु वाक्येषु रेखाङ्कितपदानां समासं विग्रहं वा चित्वा लिखत -

1X4=4

- (i) नास्ति विद्यासमं चक्षुः।

(a) विद्यया समं (b) विद्येन समं (c) विद्यायाः समं

- (ii) उपगङ्गाम् अयं विद्यालयः शोभते।

(a) गङ्गायाः दूरम् (b) गङ्गायाः समीपम् (c) गङ्गायाम् एव

(iii) रामः मृगस्य पश्चात् धावति स्म ।

(a) उपमृगम् (b) अनुमृगम् (c) समृगम्

(iv) कदापि न ऋतं मा वद ।

(a) अनृतम् (b) नानृतम् (c) अनृतम्

7. अधोलिखितेषु वाक्येषु रेखाङ्कितपदानां प्रकृतिप्रत्ययौ संयोज्य विभज्य वा लिखत -

1X4=4

(i) यथासमयं सर्वेषां महत्त्वं विद्यते ।

(a) महत्+त्व (b) महान्+त्वम् (c) महत्+तु

(ii) अस्ति+ठक् जनाः एव ईश्वरं पूजयन्ति ।

(a) आस्तिकाः (b) आस्तिकः (c) आस्तिकम्

(iii) क्रूरता सदैव निन्दनीया ।

(a) क्रूर+तल् (b) क्रूर्+तल् (c) क्रूर+ता

(iv) शीतला+टाप् देवी कुत्र विद्यते ।

(a) शीतलाः (b) शीताला (c) शीतला

8. वाच्यानुसारं कोष्ठकेषु प्रदत्तपदैः रिक्तस्थानानि पूरयत - (केवलं प्रश्नद्वयम्)

1X3= 3

(i) ..... पाषाणखण्डेषु रत्नसंज्ञा विधीयते ।

(ii) सर्वैः ..... श्रूयन्ते ।

(iii) शिष्यैः गुरुः ..... ।

मञ्जूषा- नम्यते, मूढैः, कथाः,

9. अङ्कानां स्थाने संस्कृते समयं लिखत -

1X4 =4

(i) शिल्पिका प्रातः (7.15)..... वादने प्रातराशं कृत्वा विद्यालयं गच्छति ।

(ii) सा विद्यालयात् (1.30)..... वादने गृहम् आगत्य भोजनं खादति स्म ।

(iii) सायं (5.30) ..... वादने सा अन्याभिः बालिकाभिः सह खेलति ।

(iv) सा (9.00) ..... वादने भोजनं खादति ।

10. मञ्जूषातः उचितं पदं चित्वा वाक्यानि पूरयत - (केवलत्रयम्)

1X3 =3

(i) ईश्वरः ..... करोति शोभनमेव करोति ।

(ii) तत्र ..... शब्दः भवति ।

(iii) भो बालकाः, यूयम् ..... गच्छथ ?

(iv) ..... दशरथः नाम नृपः आसीत् ।

मञ्जूषा- उच्चैः, यत्, कुत्र, पुरा

11. रेखाङ्कितपदानां संशोधनं कृत्वा उत्तरपुस्तिकायां पुनः लिखत - (केवलत्रयम्)

1X3 = 3

- (i) जन्तुशालायाम् अनेके सिंहः आसन् ।
- (ii) तत्र वानराः अपि कूर्दति ।
- (iii) ताः पुष्पाणि विकसन्ति ।
- (iv) तर्हि एव जीवनं सफला भविष्यति ।

खण्डः घ

पठित- अवबोधनम्

12. निम्नलिखितं गद्यांशं पठित्वा तदाधारितान् प्रश्नान् उत्तरत -

"भो वासव ! पुत्रस्य दैन्यं दृष्ट्वा अहं रोदिमि । सः दीन इति जानन्नपि कृषकः तं बहुधा पीडयति । सः कृच्छ्रेण भारमुद्रहति । इतरमिव धुरं वोढुं सः न शक्नोति । एतत् भवान् पश्यति न ?" इति प्रत्यवोचत् ।

"भद्रे ! नूनम्। सहस्राधिकेषु पुत्रेषु सत्त्वपि तव अस्मिन्नेव पुत्रे एतादृशं वात्सल्यं कथम् ?" इति इन्द्रेण पृष्टा सुरभिः प्रत्यवोचत् -

यदि पुत्रसहस्रं मे सर्वत्र सममेव मे ।

दीनस्य तु सतः शक्र ! पुत्रस्याभ्यधिका कृपा ॥

"बहुन्यपत्यानि मे सन्तीति सत्यम् । तथाप्यहमेतस्मिन् पुत्रे विशिष्य आत्मवेदनामनुभवामि । यतो हि अयमन्येभ्यो दुर्बलः । सर्वेष्वपत्येषु जननी तुल्यवत्सला एव । तथापि दुर्बले सुते मातुः अभ्यधिका कृपा सहजैव" इति । सुरभिवचनं श्रुत्वा भृशं विस्मितस्याखण्डलस्यापि हृदयमद्रवत् । स च तामेवमसान्त्वयत् - "गच्छ वत्से ! सर्वं भद्रं जायेत ।"

I. एकपदेन उत्तरत -

1 X 2 = 2

- (i) सा पुत्रस्य किं दृष्ट्वा रोदिति ?
- (ii) सर्वेष्वपत्येषु जननी कीदृशी भवति ?

II. पूर्णवाक्येन उत्तरत -

1 X 1 = 1

- (i) सुरभिः इन्द्राय किं अवदत् ?

III. भाषिककार्यम् -

1 X 2 = 2

- (i) 'कल्याणम्' इत्यर्थे किं पर्यायपदं प्रयुक्तम् ?
- (ii) "बहुन्यपत्यानि मे सन्तीति"- अत्र सन्ति इति क्रियापदस्य कर्तृपदं किम् ?

13. निम्नलिखितं पद्यांशं पठित्वा तदाधारितान् प्रश्नान् उत्तरत -

वयोबलशरीराणि देशकालाशनानि च ।

समीक्ष्य कुर्याद् व्यायाममन्यथा रोगमाप्नुयात् ॥

I. एकपदेन उत्तरत -

1X 2 = 2

- (i) व्यायामशीलः जनः कानि समीक्ष्य कुर्यात् ?

(ii) अन्यथा जनः कम् आप्नुयात् ?

II. पूर्णवाक्येन उत्तरत -

1 X 1 = 1

(i) व्यायामशीलः कदा रुग्णः न भवति ?

III. भाषिककार्यम् -

1 X 2 = 2

(i) 'रोगमाप्नुयात्' - अत्र क्रियापदं किम् ?

(ii) 'आयुः' इति पदस्य पर्यायपदं किम् ?

14. निम्नलिखितं नाट्यांशं पठित्वा तदाधारितान् प्रश्नान् उत्तरत -

रामः - अलमतिशालीनतया ।

भवति शिशुजनो वयोऽनुरोधाद्

गुणमहतामपि लालनीय एव ।

व्रजति हिमकरोऽपि बालभावात्

पशुपतिमस्तककेतकच्छदत्वम् ॥

एषः भवतोः सौन्दर्यावलोकजनितेन कौतुहलेन पृच्छामि- क्षत्रियकुल-पितामहयोः सूर्यचन्द्रयोः को वा भवतोर्वंशस्य कर्ता ?

लवः- भगवन् सहस्रदीधितिः ।

रामः- कथमस्मत्समानाभिजनौ संवृत्तौ ?

विदूषकः- किं द्वयोरप्येकमेव प्रतिवचनम् ?

I. एकपदेन उत्तरत -

1 X 2 = 2

(i) किमर्थं हिमकरः पशुपतिमस्तके विराजते ?

(ii) क्षत्रियकुलस्य पितामहौ कौ स्तः ?

II. पूर्णवाक्येन उत्तरत -

1 X 1 = 1

(i) हिमकरः किमिव पशुपतिमस्तके विराजते ?

III. भाषिककार्यम् -

1 X 2 = 2

(i) 'शिशुजनः' इति कर्तृपदस्य क्रियापदं किम् ?

(ii) "भवतोः सौन्दर्यावलोकजनितेन कौतुहलेन पृच्छामि"- अत्र विशेषणपदं किम् ?

15. प्रश्ननिर्माणं कुरुत -

1 X 4 = 4

(i) बालभावात् हिमकरः पशुपतिमस्तके विराजते ।

(ii) अपूर्वोऽयं मानवानां सरस्वत्यवतारः ।

(iii) प्रकृत्याः सन्निधौ वास्तविकं सुखं विद्यते ।

(iv) शकटीयानं कज्जलमलिनं धूमं मुञ्चति ।



16. मञ्जूषातः उचितपदेन श्लोकस्य अन्वयं कुरुत -

1 X 4 = 4

I. शरीरोपचयः कान्तिगात्राणां सुविभक्तता ।

दीप्ताग्नित्वमनालस्यं स्थिरत्वं लाघवं मृजा ॥

अन्वयः - (i) ..... गात्राणाम् (ii)..... सुविभक्तता दीप्ताग्नित्वम्

(iii)..... स्थिरत्वं (iv) ..... मृजा ।

मञ्जूषा- निर्झर-, सञ्चरणम्, अस्मात्, एकान्ते, लाघवम्, कान्तिः, अनालस्यम्, शरीरोपचयः

17. मञ्जूषातः समुचितपदानि चित्वा अधोलिखित-श्लोकस्य अन्वयं पूरयत -

1X3=3

सेवितव्यो महावृक्षः फलच्छायासमन्वितः ।

यदि दैवात्फलं नास्ति छाया केन निवार्यते ॥

अन्वयः - फलच्छायासमन्वितः -----1----- सेवितव्यः। -----2----- यदि फलं -----  
3----- (वृक्षस्य)-----4-----केन निवार्यते।

मञ्जूषा - छाया , महावृक्षः , नास्ति , दैवात् ।

18. अधोलिखितं कथांशं समुचित-क्रमेण लिखत -

1/2X8=4

(i) तेन वित्तेन तत्पुत्रं महाविद्यालये प्रवेशं दापयितुं सफलः जातः ।

(ii) तत्र निवसन् अध्ययने संलग्नः सम्भूत् ।

(iii) पिता पुत्रं द्रष्टुं प्रस्थितः ।

(iv) कश्चन निर्धनः जनः वित्तमुपार्जितवान् ।

(v) सः बसयानं विहाय पदातिरेव प्राचलत् ।

(vi) एकदा तस्य पुत्रः रुग्णः अभवत् ।

(vii)तत् तनयः छात्रावासे वसति स्म ।

(viii) पुत्रस्य रुग्णतामाकर्ण्य सः व्याकुलः सञ्जातः ।

\*\*\*\*\*